



Shape your world



Ritsumeikan
Asia Pacific University



APU Center for Inclusive Leadership
インクルーシブ・リーダーシップセンター

Inclusive Leadership Program for the Healthcare
and Tourism Industry in Oita Prefecture



1

Background

2

Methodology



3

Research
Findings

4

Insights for
Leadership



Background

- Development of Oita Prefecture
- APU's contribution to Inclusive Leadership
- Leadership Model and Practical Training



Personal
Resilience



Organizational
Resilience

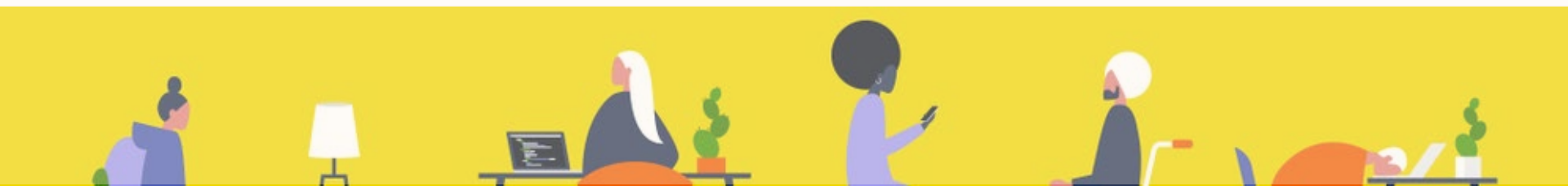
Community
Resilience

Coping



Anticipation

Adaptation





The 6 Signature Traits of an Inclusive Leader

(Deloitte , 2016)



The 5 Mindsets of an Inclusive Leader

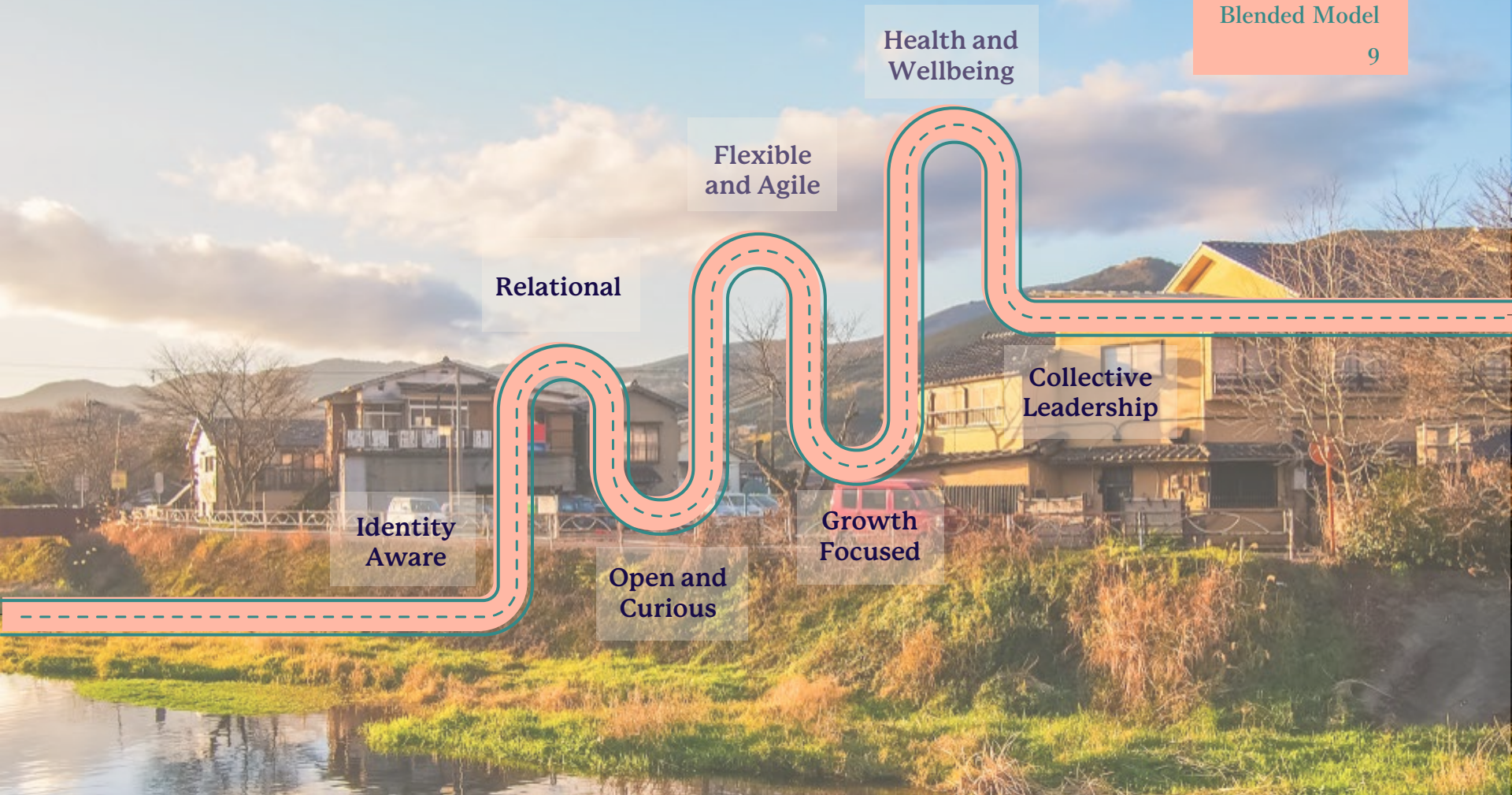
(Diversity Council
of Australia)



The 6 Domains of Personal Resilience

(Rossouw et al
2017)





Health and Wellbeing

Flexible and Agile

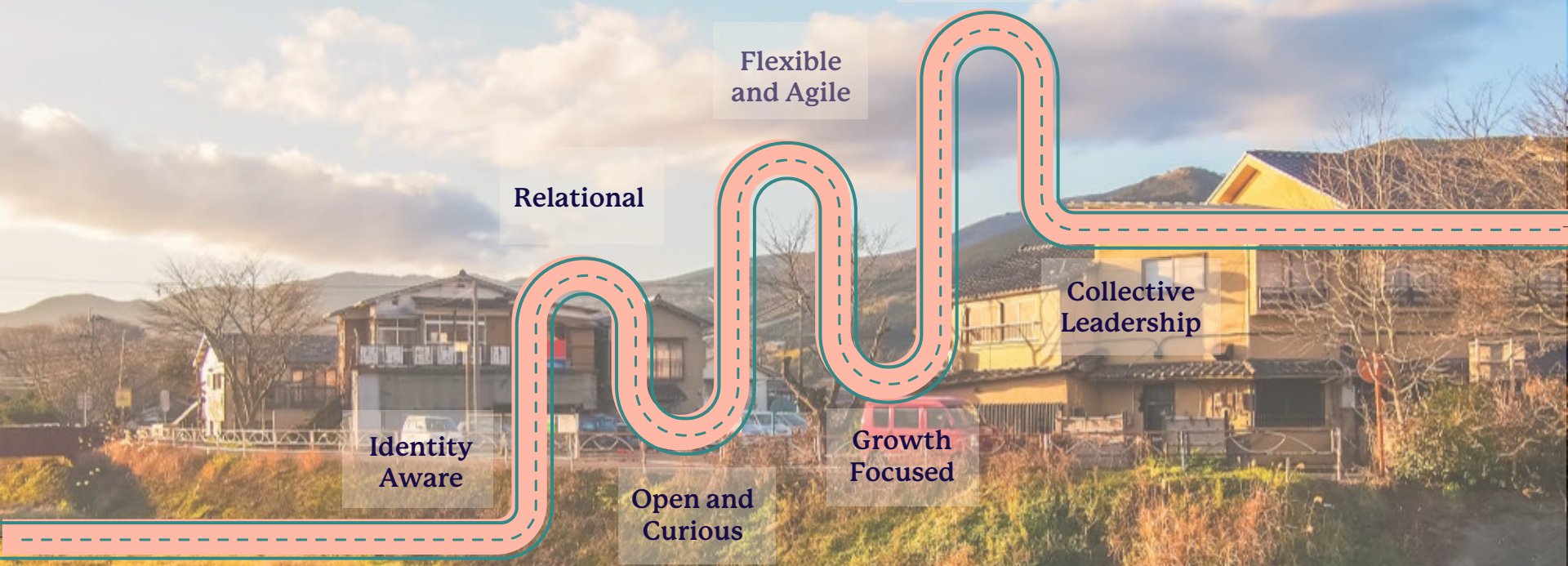
Relational

Collective Leadership

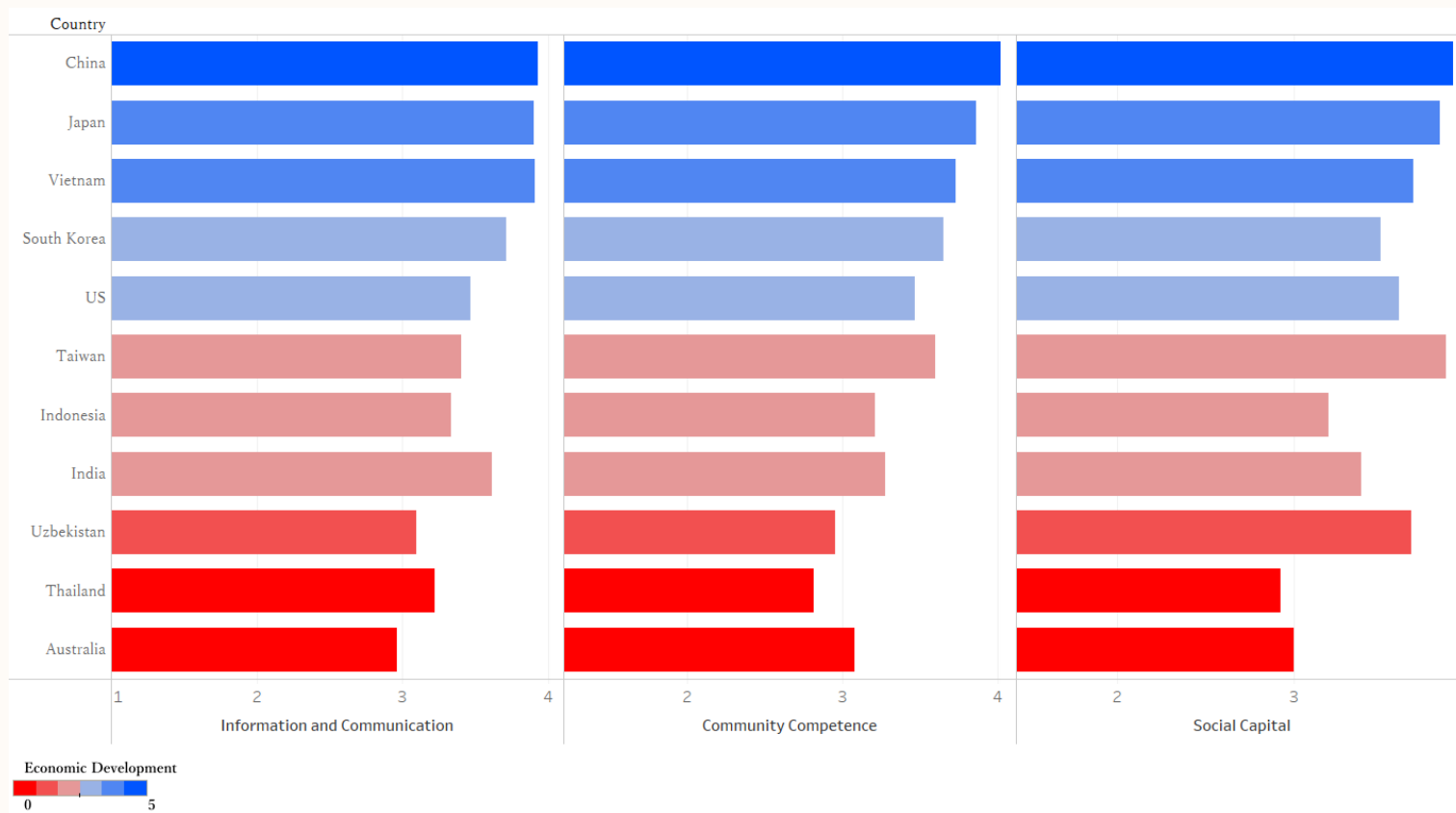
Identity Aware

Growth Focused

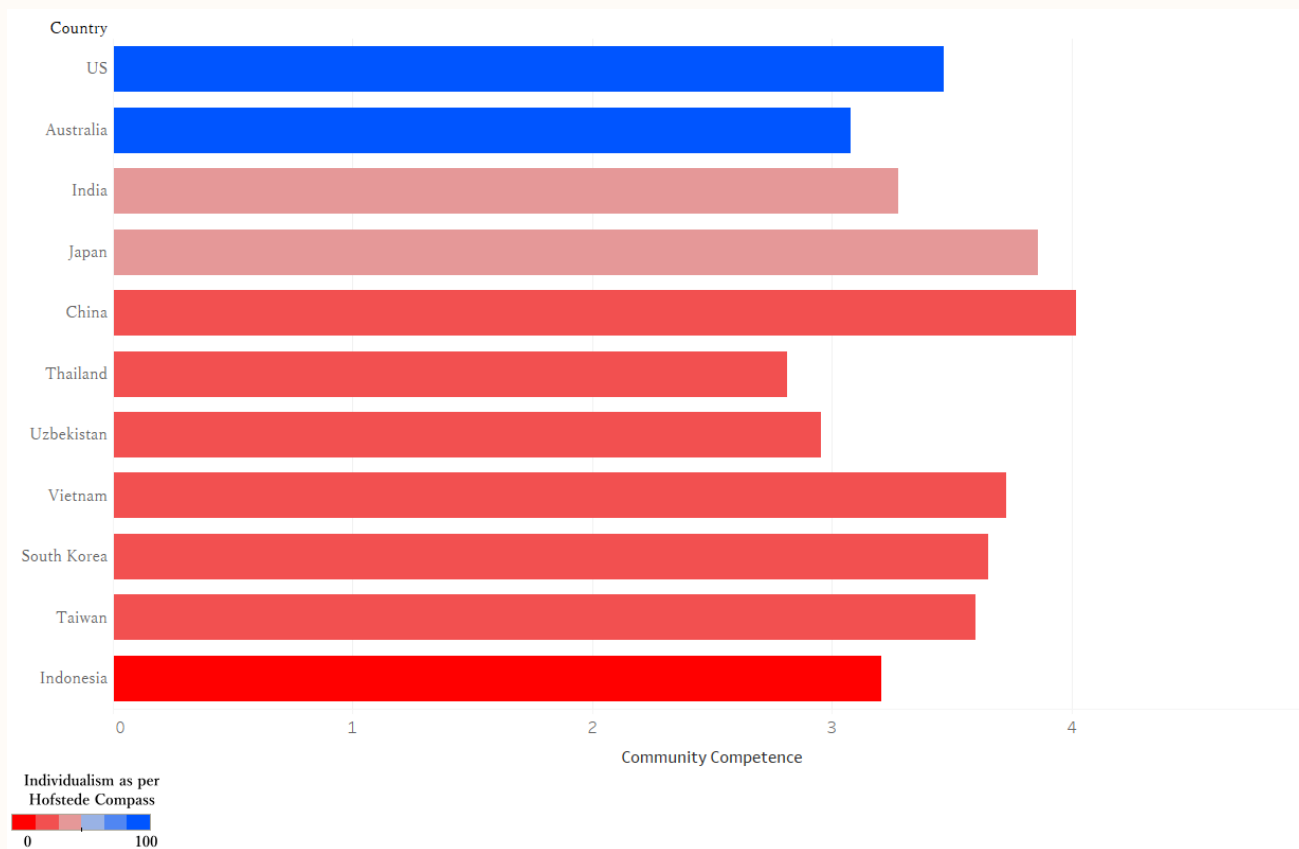
Open and Curious



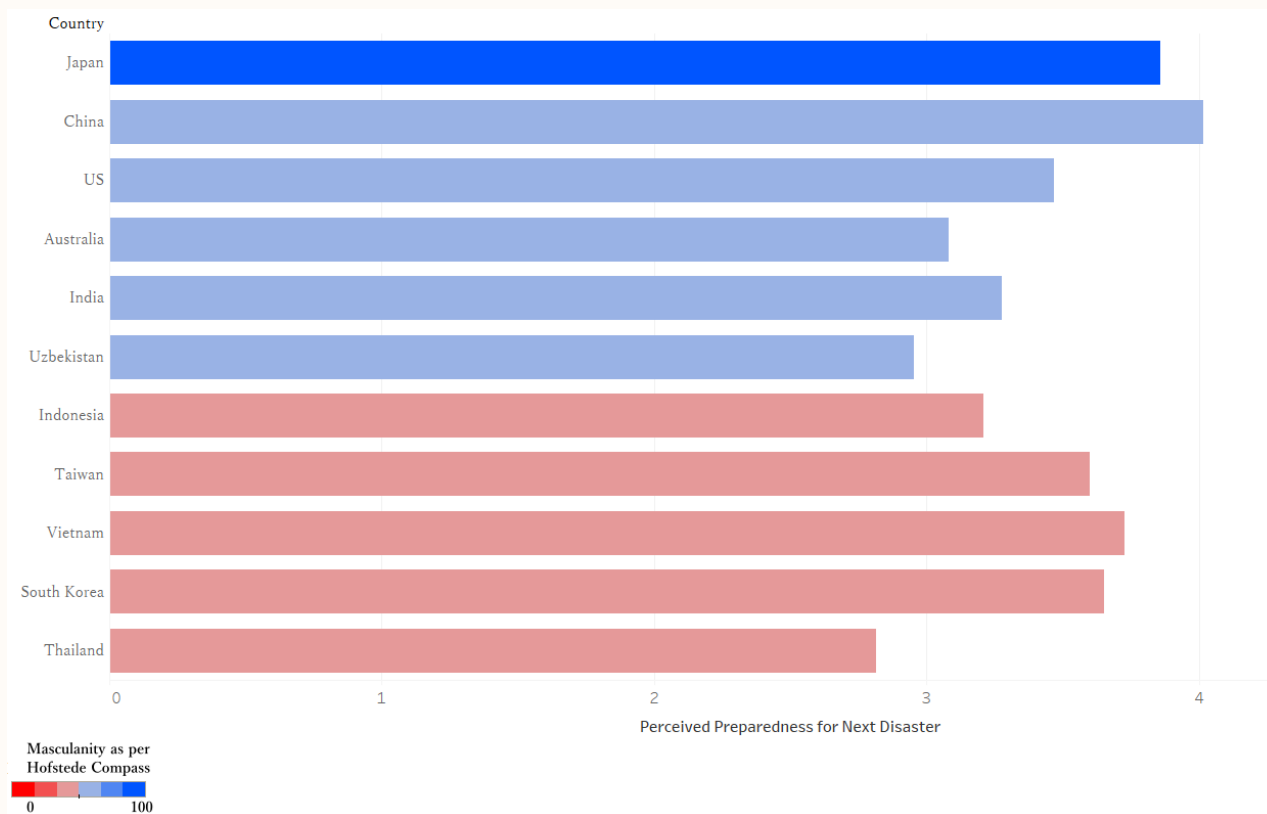
Relationship between Economic Development and Community Resilience



Relationship between Hofstede's Individualism and Community Resilience



Relationship between Hofstede's Masculinity and Preparedness for Disaster



1 Individualism or Collectivism does not affect Resilience Building.

2 There's no measurable difference in perceived threat whether the society is masculine or not.

3 Economic Development is a key condition to have a competent and resilient organization.

4 Open information and communication channels are a important in crisis.



Shape your world



Ritsumeikan
Asia Pacific University

Thoughts?

14



PARDO Phillip
APU, Japan



BENNETT Leigh
ITLA, Australia



YADAV Chaitraj
APU, Japan



Dr. COOPER Malcolm
APU, Japan

- Biggs, R. (2015). Principles for Building Resilience Sustaining Ecosystem Services in Social-Ecological Systems. Retrieved from https://assets.cambridge.org/97811070/82656/frontmatter/9781107082656_frontmatter.pdf
- Bourke, J., & Dillon, B. (2016). The Six Signature Traits of Inclusive Leadership. In Deloitte (pp. 7–18). Retrieved from Deloitte University Press website: <https://www2.deloitte.com/content/dam/Deloitte/au/Documents/human-capital/deloitte-au-hc-six-signature-traits-inclusive-leadership-020516.pdf>
- Folke, C., Carpenter, S. R., Walker, B., Scheffer, M., Chapin, T., & Rockström, J. (2010). Resilience Thinking: Integrating Resilience, Adaptability and Transformability. *Ecology and Society*, 15(4). Retrieved from <https://www.jstor.org/stable/26268226>
- McGrath, J. E., Berdahl, J. L., & Arrow, H. (1995). Traits, expectations, culture, and clout: The dynamics of diversity in work groups. *Diversity in Work Teams: Research Paradigms for a Changing Workplace.*, 17–45. <https://doi.org/10.1037/10189-001>
- Miller, F. A. (1998). Strategic Culture Change: The Door to Achieving High Performance and Inclusion. *Public Personnel Management*, 27(2), 151–160. <https://doi.org/10.1177/009102609802700203>
- Milliken, F. J., & Martins, L. L. (1996). Searching for Common Threads: Understanding the Multiple Effects of Diversity in Organizational Groups. *Academy of Management Review*, 21(2), 402–433. <https://doi.org/10.5465/amr.1996.9605060217>
- Mor-Barak, M. E., & Cherin, D. A. (1998). A Tool to Expand Organizational Understanding of Workforce Diversity. *Administration in Social Work*, 22(1), 47–64. https://doi.org/10.1300/j147v22n01_04
- Roberson, Q. M. (2006). Disentangling the Meanings of Diversity and Inclusion in Organizations. *Group & Organization Management*, 31(2), 212–236. <https://doi.org/10.1177/1059601104273064>
- Rossouw, J., Rossouw, P., Paynter, C., Ward, A., & Khnana, P. (2017). Predictive 6 Factor Resilience Scale – Domains of Resilience and Their Role as Enablers of Job Satisfaction. *International Journal of Neuropsychotherapy*, 5(1), 25–40. <https://doi.org/10.12744/ijnpt.2017.1.0025-0040>