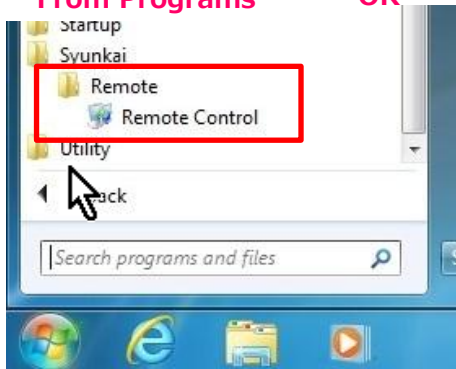


1. Remote operation screen startup

① Two options for startup:

From Programs OR



Click on the icon



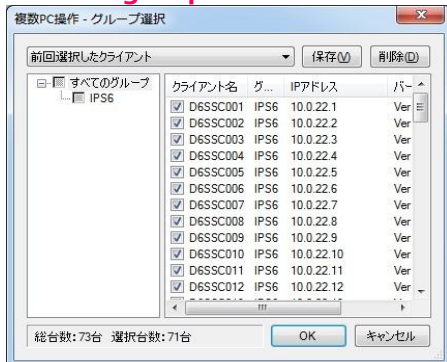
② "Syunkai" user authentication

Enter the designated password



③ Select group

Select group and its PCs and click OK

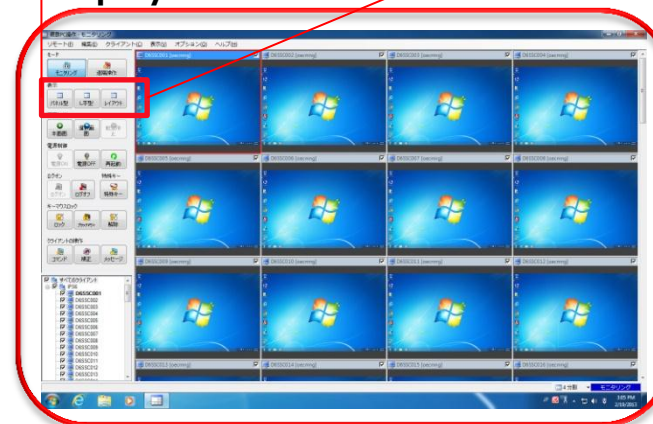


2. Switching remote operation screens

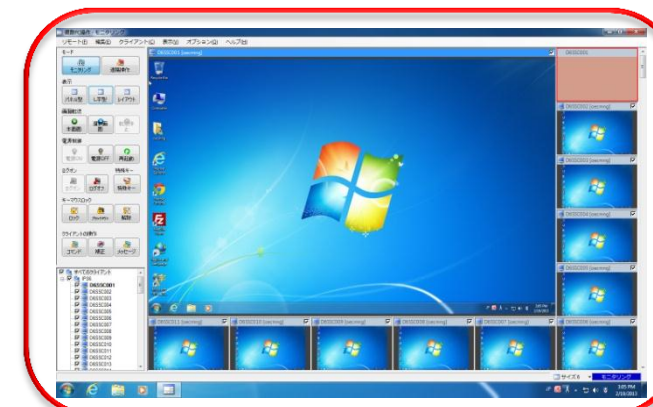
Paneled display and L-shaped display choose one



① Paneled display



② L-shaped display



操作ボタンの説明

表示 (Display)

- パネル型 (Panel Display)
Show screens in panels.
- L字型 (L-shape Display)
Show screens in L-shape.
- レイアウト (Layout Display)
Show screens arranged like the room layout

電源制御 (Power Control)

Control client PC power from the remote.

- 💡 電源ON (Power ON)
- 💡 電源OFF (Power OFF) 🔄 再起動 (Restart)

ログオン (Logon)

Logon users to client PCs from the remote.

- 👤 ログオン (Logon) 🚪 ログオフ (Logoff)

キーマウスロック

(Keyboard and Mouse Lock)

Control client PC keyboard and mouse operation from the remote.

- 🔒 ロック (Lock)
- 🚪 ブラックアウト (Blackout)
- 🔓 解除 (Unlock)

Unlock locked and unlock keyboards & mice and blackout screens.



モード (Mode)

- 👁️ **モニタリング (Monitoring)**
Display and confirm client PCs with this mode.
- 👤 **遠隔操作 (Remote Operation)**
Select a PC from the client PC list and remotely operate it with this mode.

画面転送 (Show Screen)

- 🎥 **本画面 (Current Screen)**
Show the screen of the instructor's computer on the other selected computers.
- 👤 **選択画面 (Selected Screen)**
Show the screen of the selected computer on the other specified computer.
- 🛑 **転送停止 (Stop Showing)**
Stop showing screen.

特殊キー (Special Key)

- 👤 **特殊キー (Special Key)**
Use the Special Key to run specialized operations such as Ctrl+Alt+Del (reboot) and Windows+L (PC Lock).

クライアントの操作 (Client Control)

- 👤 **コマンド (Command)**
Run commands from the remote.
- 👤 **補正 (Realign and resize)**
Arrange window size and location on multiple client PCs based on the standard client PC.
- 📧 **メッセージ (Message)**
Send message to client PCs.