

APU-Net Guide	Ver	Applicable OS
<b>SPSS Statistics Install Manual</b>	1.0	Win/Mac

■ When installing and activating IBM SPSS Statistics, perform it with Administrator privileges. Start by right-clicking on the executable and clicking Run as administrator (located under More or Details depending on your OS). We recommend that you turn off your antivirus software. Quit any applications that are running.

■ When the installation is complete, the license authentication wizard appears.

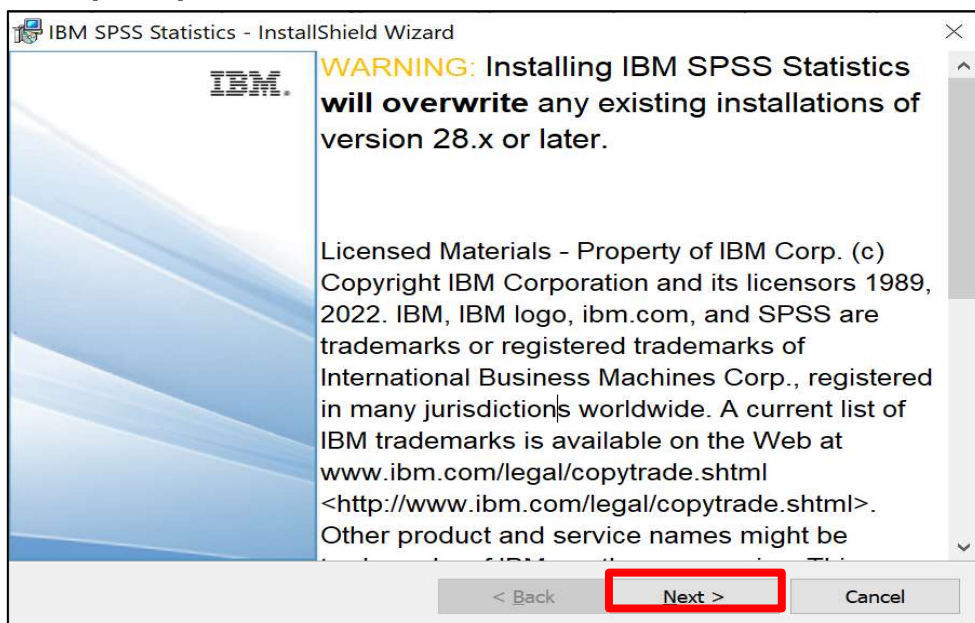
■ Running multiple versions and upgrading from previous releases

You do not need to uninstall the older version before installing a newer version of IBM SPSS Statistics. You can install and run multiple versions on the same machine.

However, do not install the new version into the same directory where the previous version was installed. If you want to change the version, please uninstall the old version and then install the new version.

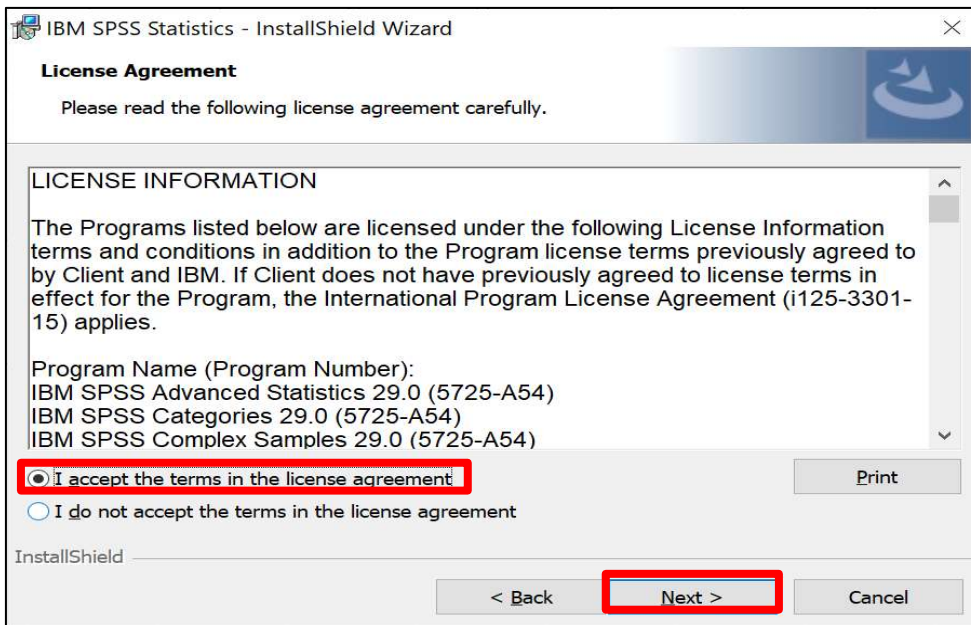
## 1. Install

■ Click [Next >].



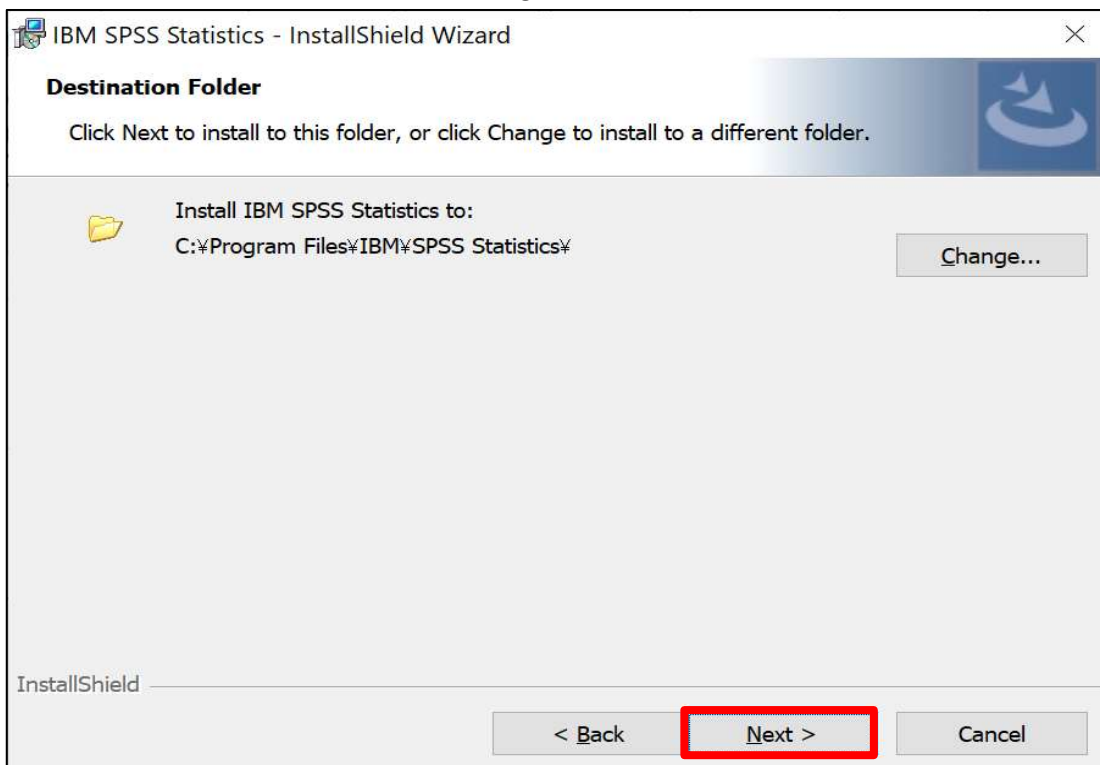
APU-Net Guide	Ver	Applicable OS
<b>SPSS Statistics Install Manual</b>	1.0	Win/Mac

- Set "I accept the terms in the license agreement" and click [Next >].



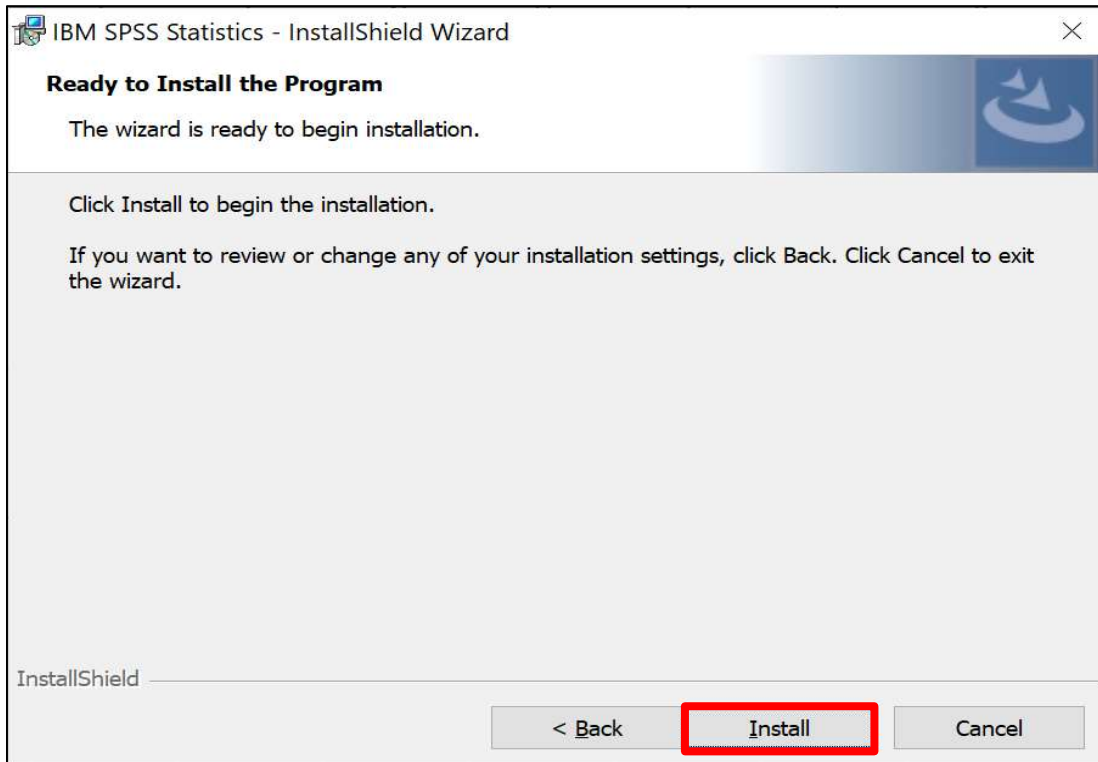
- Set the folder to install IBM SPSS Statistics, and click [Next >].

It is recommended to install with the default settings (as is).

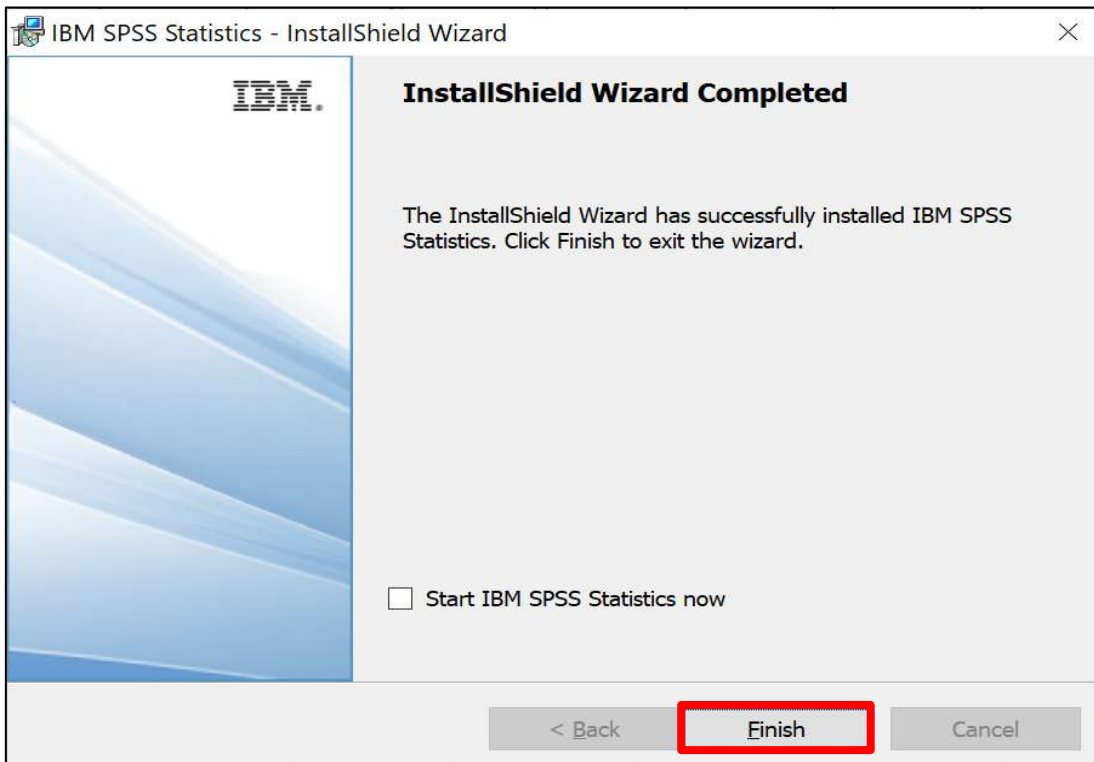


APU-Net Guide	Ver	Applicable OS
<b>SPSS Statistics Install Manual</b>	1.0	Win/Mac

- Click [Install]. Installation of IBM SPSS Statistics will begin.



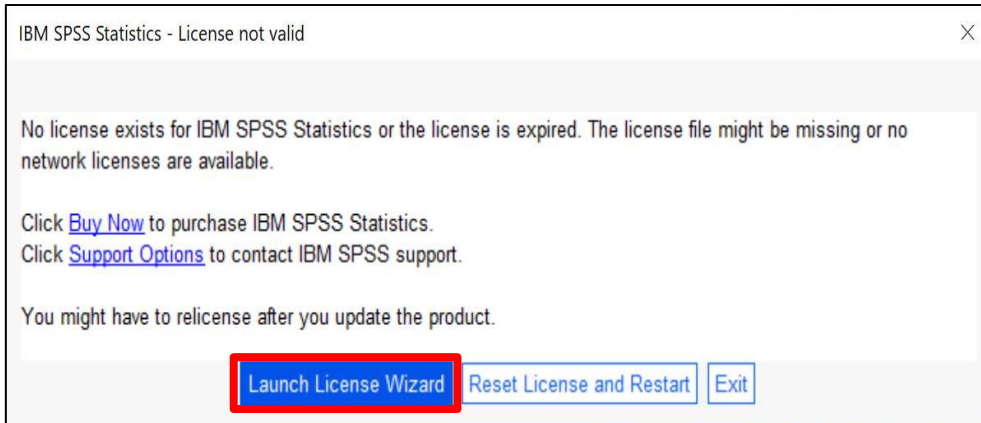
- When the installation of IBM SPSS Statistics is completed, the following screen will be displayed.



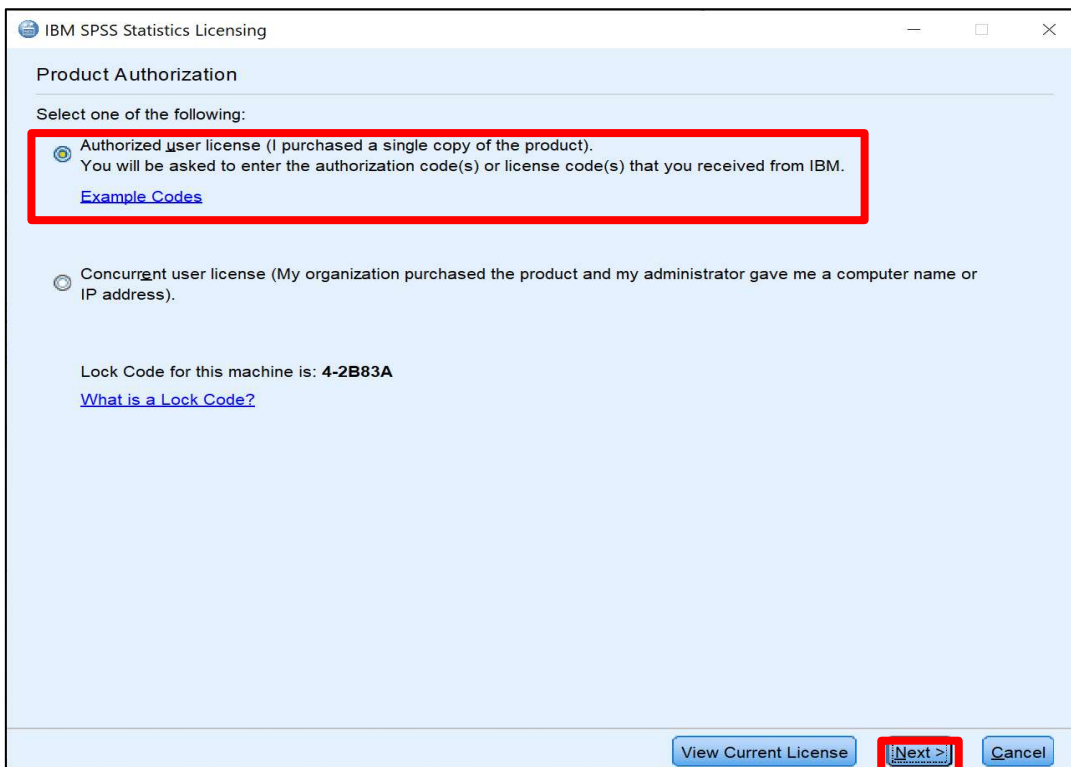
APU-Net Guide	Ver	Applicable OS
SPSS Statistics Install Manual	1.0	Win/Mac

## 2. License Authorization

- When you start SPSS for the first time, you will be asked if you would like to start the License Wizard. Click [Launch License Wizard].



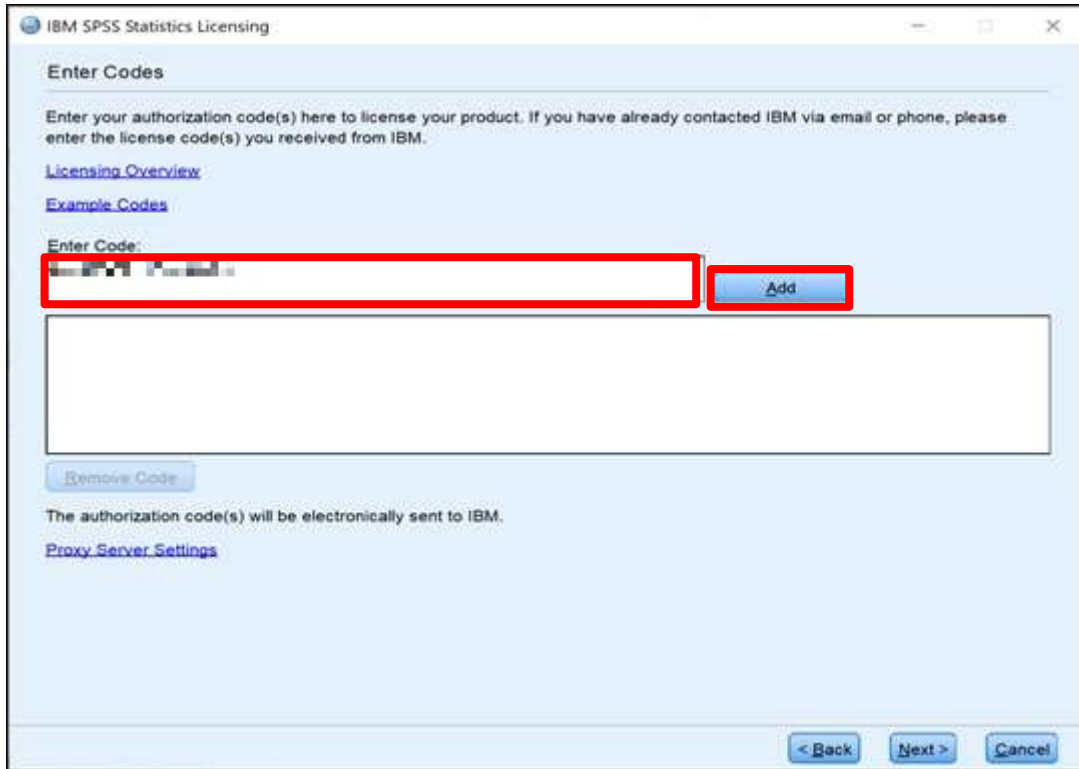
- On the [Product Authorization] screen, select "Authorized user license (I purchased a single copy of the product)." and click [Next >].



APU-Net Guide	Ver	Applicable OS
SPSS Statistics Install Manual	1.0	Win/Mac

■ On the [Enter Codes] screen, enter the "authentication code (20 alphanumeric characters)" and click [Add].

\*The authentication code can be found inside the provided folder.



IBM SPSS Statistics Licensing

**Enter Codes**

Enter your authorization code(s) here to license your product. If you have already contacted IBM via email or phone, please enter the license code(s) you received from IBM.

[Licensing Overview](#)

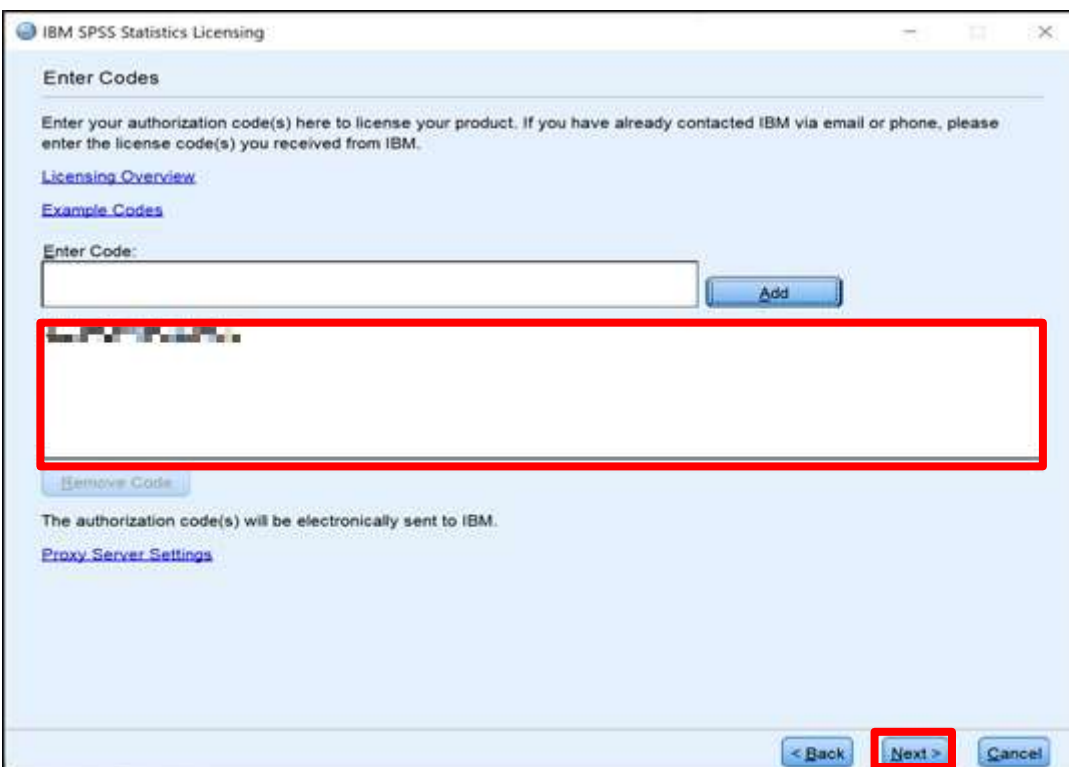
[Example Codes](#)

Enter Code:

The authorization code(s) will be electronically sent to IBM.

[Proxy Server Settings](#)

■ On the [Enter codes] screen, move the code to the bottom as shown below and click "Next".



IBM SPSS Statistics Licensing

**Enter Codes**

Enter your authorization code(s) here to license your product. If you have already contacted IBM via email or phone, please enter the license code(s) you received from IBM.

[Licensing Overview](#)

[Example Codes](#)

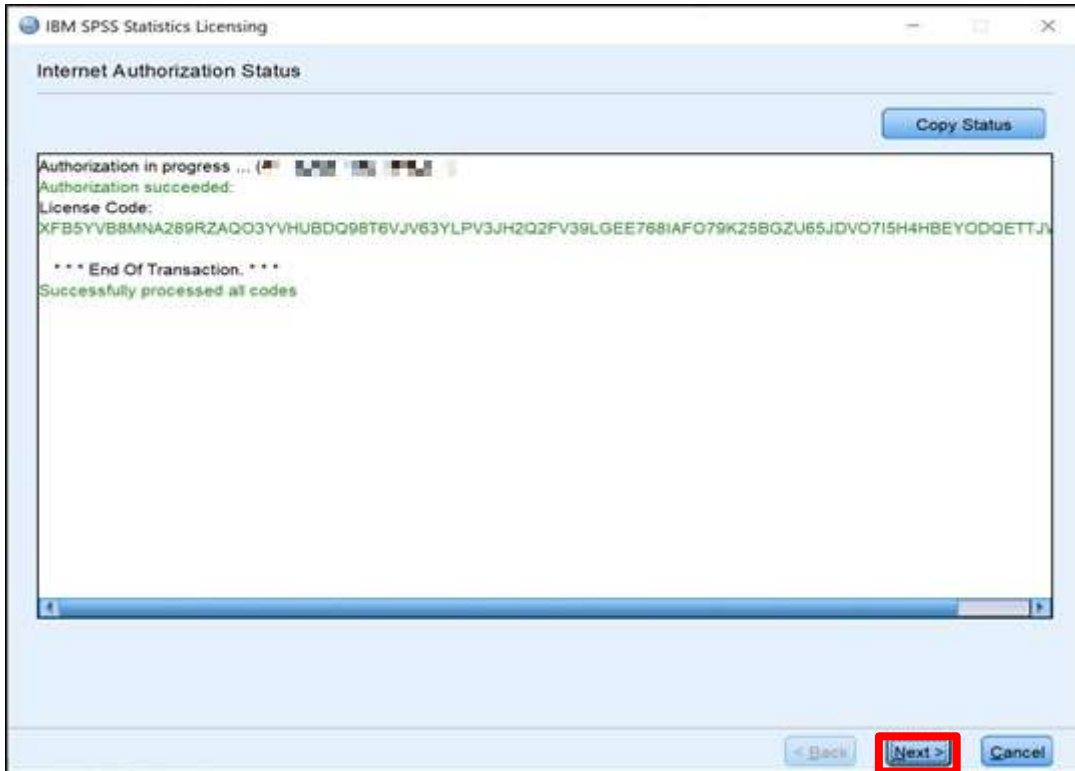
Enter Code:

The authorization code(s) will be electronically sent to IBM.

[Proxy Server Settings](#)

APU-Net Guide	Ver	Applicable OS
<b>SPSS Statistics Install Manual</b>	1.0	Win/Mac

- On the [Internet Authentication Status] screen, when "Successfully processed all codes" is displayed in green letters, click [Next >].



- After confirming that the license has been authenticated on the [Licensing Completed] screen, click [Finish].

