

How to take the Japanese Placement Test

At APU, **Japanese language courses are mandatory subjects for graduation.** To determine the level of the Japanese language course at which you will start, you are required to take a placement test.

Please follow the steps below to take the placement test on **September 6th ~ 8th and 21st**. (Japan Standard Time).

1. Test Schedule and How to Take it

① Online Placement Test

Monday, September 6th, 9:00am ~ Wednesday, September 8th, 5:00pm JST (Japan Standard Time)

*The duration of the test will vary depending on your level of Japanese. Please expect that it will take about one hour at the most.

*You can take this test at any time during the above period, but you can only take it once, and cannot pause or restart once you have begun the test.

② Online Interview *Target person only

Tuesday, September 21st, 10:00am~4:00pm JST (Japan Standard Time)

*The interview takes about 10 minutes. The interview time will be notified by email.

★How to take the Test *Please access the below URL

Test URL	https://apujpt.apu.ac.jp/
ID	Your Application Number *in 8 half-width digits
Password	Your Date of Birth (yyyymmdd) *in 8 half-width digits



2. Points to Note when Taking the Test

- All placement tests are conducted online and can only be taken once. Please prepare the necessary devices (Internet connection, PC for the test, earphones, web-camera, etc.) in advance.
- Depending on the September 6th ~ 8th test result, students will be interviewed online.
Be sure to keep your time available on the day of the interview (Tuesday, September 21st).
- Details may be sent to the e-mail address registered on students' APU enrollment application.
Please check your email regularly.

3. Orientation for New Students

Orientation for New Students will be Conducted Online.

<http://en.apu.ac.jp/studentssupport/page/content0334.html/>

The orientation site (2021 Fall version) for new students can be viewed from the above link or QR code from September 14th (Tentative). Please check this site regularly for the latest updates and essential information in regards to academic and student life at APU.



<Important Dates>

9/6 ~ 9/8	Japanese Placement Test (Online Test)
9/14 (Tentative)	Orientation site opens. Please access all orientation materials from the site listed above.
9/21 ~10/1	Fall semester Orientation
9/21	Japanese Placement Test (Online Interview) *Target person only.
9/29~ 9/30	Course Registration (Online)

Japanese Placement Test Schedule

September

Placement Test Preparation Period

Placement Test Date

Interview Schedule Information

Interview Date

Result Announcement Date

~ 5th

6th ~ 8th

13th ~ 20th

21st

28th



Prepare the environment and devices for taking the WEB placement test.

- Do you have a PC to take the test?
- Do you have an internet connection?
- Do you have earphones and memo pads for the listening test?

If you are not able to prepare the above environment and devices, please contact to "cleac@apu.ac.jp"



Take the WEB Placement Test.

*6th 9:00am ~ 8th 5:00pm
JST (Japan Standard Time)

URL: <https://apuipt.apu.ac.jp/>
ID: Your Application Number
Password: Your Date of Birth



Information on the ZOOM interview will be sent to the e-mail address registered on your APU enrollment application.



Please keep your interview time schedule open.

*Interview test is for target students only

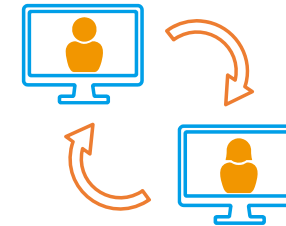


Receive your APU email account online and check the details of ZOOM.



Download the ZOOM application to prepare for the online interview.

Please prepare the web-camera for this interview.



Access the ZOOM interview URL and get interviewed. (Approx. 15 minutes)



<http://en.apu.ac.jp/academic/page/content0038.html/?c=17>

Check the placement test results on the APU website.



An email will be sent to your APU email account regarding the Hiragana Session

For students who were placed in Hiragana sessions based on their test results.