



# Safe Exam Browser



# Safe Exam Browser (SEB)



## ■ Browser to Use for Moodle

- When taking Moodle tests in class, you will be asked to install this app.

## ■ If a “Safe Exam Browser” notification appears at the time of an in-class test, please make sure **to install and finish setting it up before taking the test.**

## ■ When using SEB with personal devices (BYOD), please be careful of the following:

- **Regardless of the device, keyboard input will be set to English.**
  - The alphabet is the same, but symbol input will be different (such as “@”, “( )”, “:”, “;”, etc.).
- Smartphones and tablets cannot use or install this app.
- If you have issues using SEB on your own device, please use the [rental PC locker on the 3<sup>rd</sup> floor of Building D.](#)
- Regarding SEB details and bugs, please refer to the [application developer company's webpage.](#)

# Installation and Setup

- ① Check the requirements from the [application developer company's website](#) (English only)
- ② Download the installer for your own device from the [download page](#).

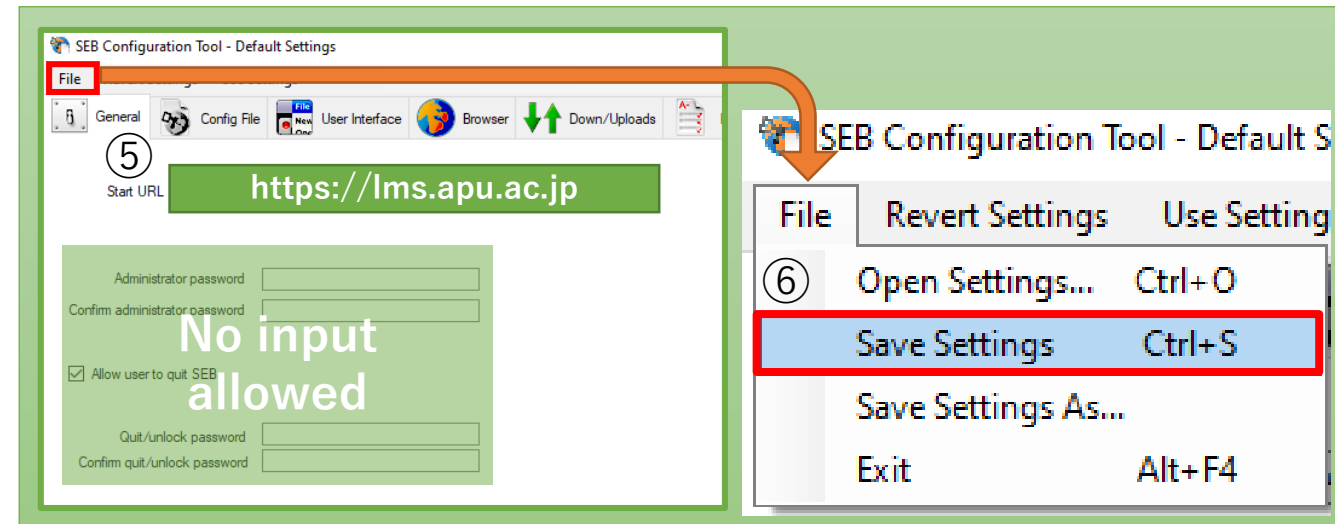
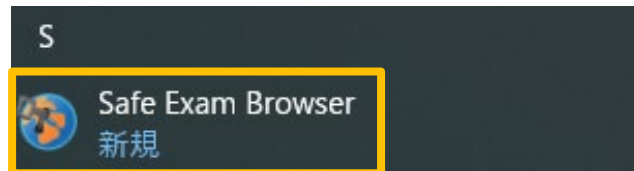
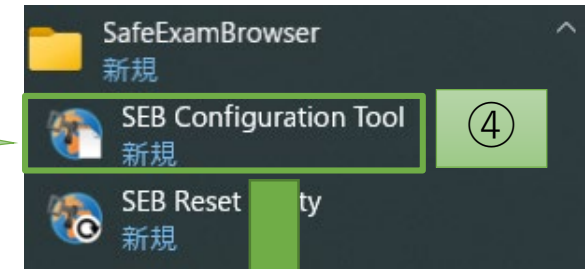
③ Launch the downloaded file and install

④ After installing, launch the “SEB Configuration Tool”

⑤ Enter “https://lms.apu.ac.jp” under “Start URL”

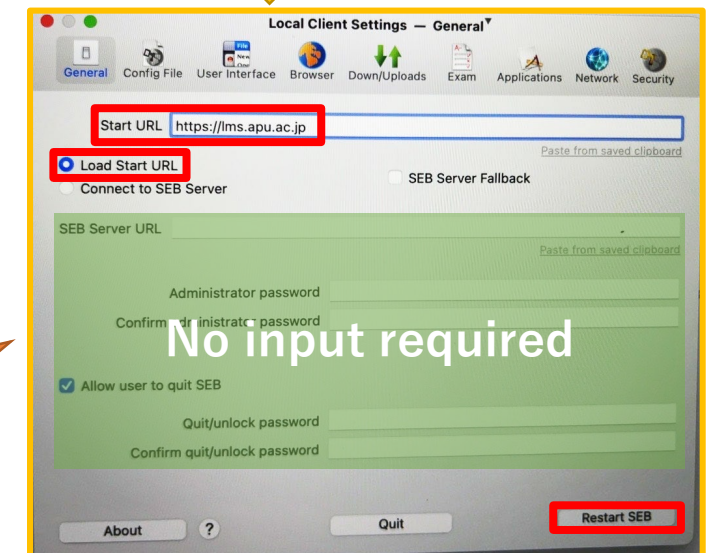
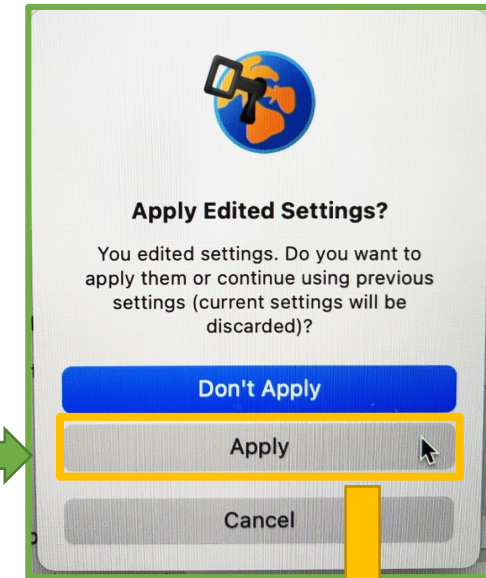
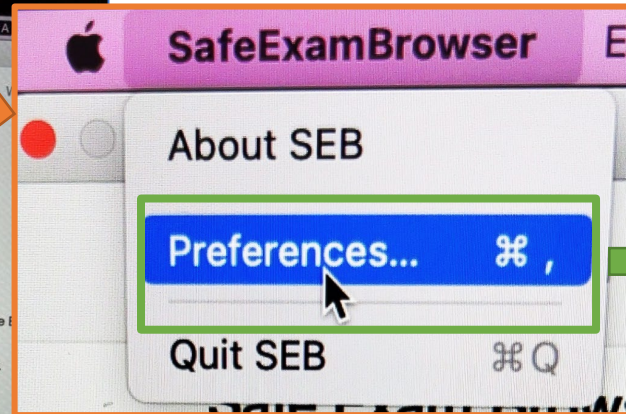
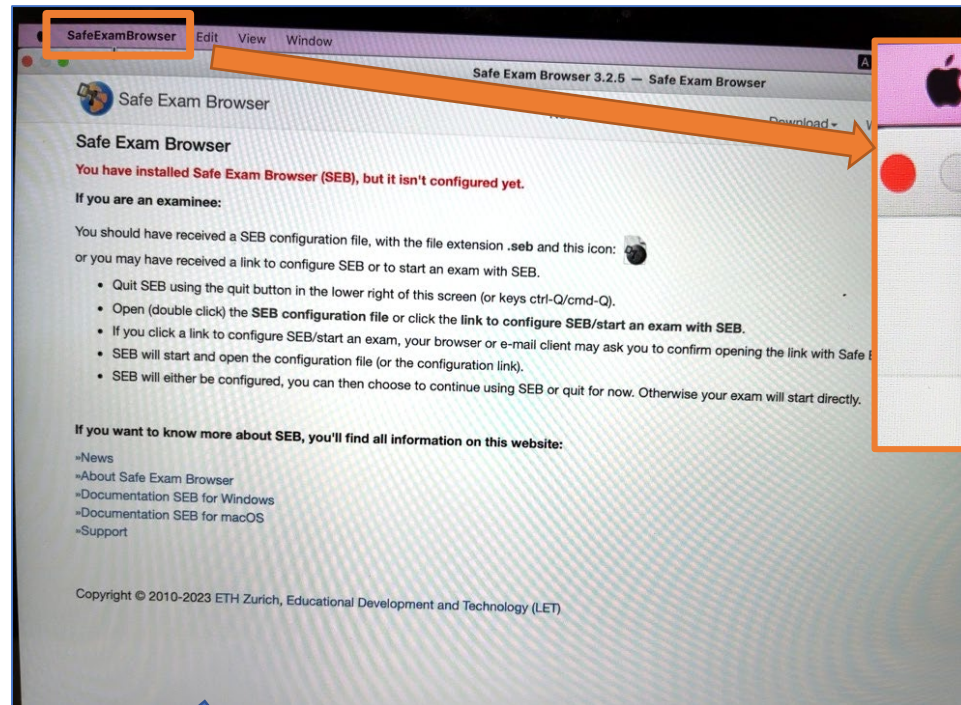
⑥ Click “Save Settings” under “File” and close

⑦ Launch the Safe Exam Browser



# Installation and Setup

The method for accessing the settings is different on Mac devices.  
Please check the [developer's website](#) for more details (English only).

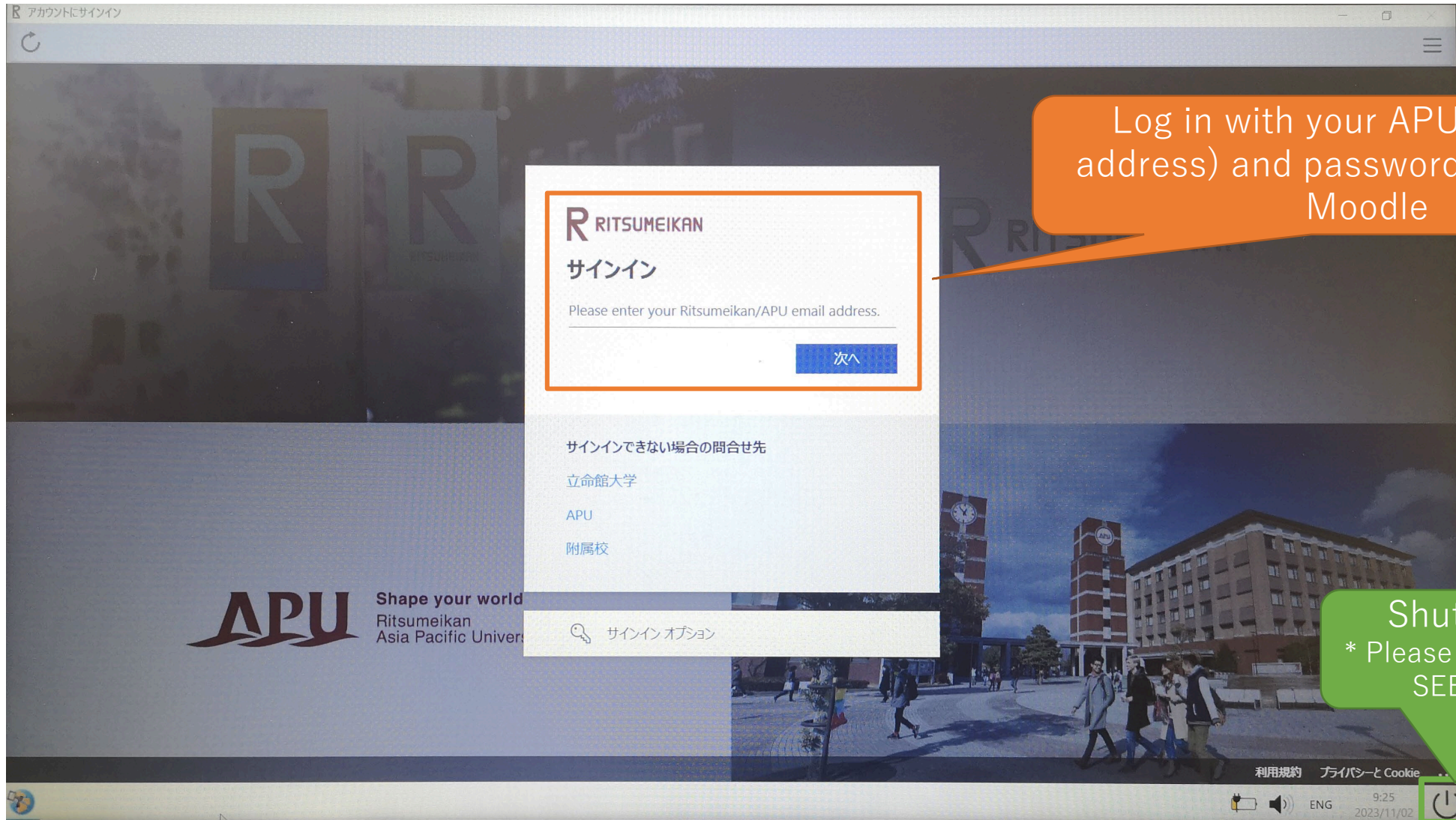


Launch SEB after installing the application

Enter "https://lms.apu.ac.jp" for "Start URL", select "Load Start URL", then save the settings by clicking on "Restart SEB."



# Launch Safe Exam Browser



Log in with your APU ID (email address) and password to use APU Moodle

Shut down SEB here  
\* Please make sure to shut down SEB after taking a test