

Shape your world



Ritsumeikan
Asia Pacific University

Ritsumeikan Center for Asia Pacific Studies



*Rediscovering Cooperation
in a Fragmenting World*

Asia Pacific Conference 2025

November 29 (Sat) - 30 (Sun), 2025

PROGRAM

APU 25th
Anniversary

Leap
Beyond
Global

25th

IMPORTANT NOTES FOR PARTICIPANTS

1. Accommodation

We kindly ask all participants to arrange their own accommodation. As there are no lodging facilities near the university, we recommend staying around Beppu Station. We appreciate your understanding that no subsidies or financial support for travel expenses are available.

2. Registration

The registration desk is located on the 1st floor of Building J/Green Commons and will open at 8:30 a.m. All participants are required to register upon their arrival at the conference. If you have completed registration on the first day, registration on the second day is not necessary.

3. Name Tag

A name tag will be distributed to each presenter/chair/discussant at the registration desk. This will serve as your ID during the conference and as a meal pass for the reception dinner on Saturday, the 29th. Please keep it with you throughout the conference. (Please note that name tags will not be provided for audience members.)

4. Cloakroom

Luggage storage is available at the registration desk. Please note that we cannot hold items overnight, so be sure to collect your belongings by 5:30 p.m. on the same day. For those attending the dinner reception, please bring your luggage with you to the reception venue.

5. Presentation Time

Each panel session runs for 100 minutes (1 hour and 40 minutes). For those who applied as Individual Presenters, each presenter will have 20 minutes (including Q&A). The remaining time should be allocated to discussion. For those who applied as a *Pre-formed Panel*, time allocation within the session is at the discretion of the panel.

6. Presentation Equipment and File Compatibility

At APU, all computers use Windows software. If you have made your presentation using a Mac, we recommend making a PDF version as well, as some file types may not be supported by Windows PCs. If you plan to use a PowerPoint for your presentation, we recommend bringing your own device and connecting it to our monitors/projectors, etc. using the HDMI cable provided in each room. Presenters will be responsible for ensuring their devices are HDMI compatible.

7. Lunch Arrangements

We will break for lunch at 12:50 p.m.-1:50 p.m. Please make your own lunch arrangements. Lunch will be available for purchase at the cafeteria, as well as at the Lawson convenience store.

8. Dinner Reception

The dinner reception will be held as follows:

- Date and Time: Saturday, November 29th, 5:30 p.m.-7:00 p.m.
- Venue: Cafeteria

Your name card will serve as a meal pass for the dinner reception. Audience members who wish to attend the dinner reception are required to pay an additional fee of 3,000 yen in cash (Japanese yen) at the reception venue.

9. Quiet and Relaxation Spaces

The Quiet Space on the 2nd floor of cafeteria can be used for prayer. The Relaxation Space on the 2nd floor of Building F is also available for rest or taking a nap. Please refer to the campus map on the following page for more details.

**Please note that APU students and faculty/staff members who are not participants of the conference may also be using these spaces.*

10. Refreshments

There are refreshments (sweets, tea) available on the 1st, 2nd and 3rd floor of Building J/Green Commons. Please refer to the floor map for the locations.

11. Photo and Video Notice

During the conference, the organizers may take photographs or videos. These may be used in future conference-related promotional materials, on the AP Conference website, on the official website of Ritsumeikan Asia Pacific University, and on the university's social media platforms. If you do not wish to be photographed or filmed, please speak with a staff member wearing an armband.

We thank you in advance for your cooperation and understanding, and we hope you enjoy the conference.

Campus Map

Cafeteria
(1st floor of Building E)

Quiet/Prayer Space
(2nd floor of Building E)

Keynote & Panel Sessions
(Building J/Green Commons)

Lunch

Nov. 29th (Sat) & 30th (Sun): 11:00 a.m. - 2:00 p.m.

Dinner Reception

Nov. 29th (Sat): 5:30 p.m. - 7:00 p.m.

Registration

Nov. 29th (Sat) & 30th (Sun): Open at 8:30 a.m.

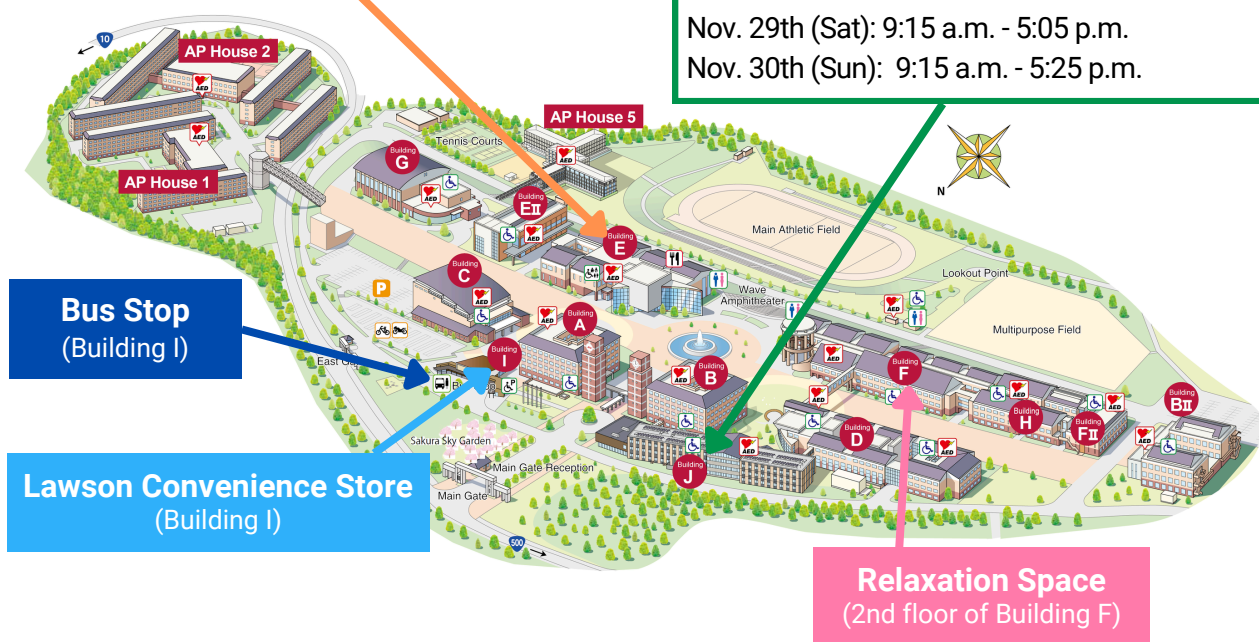
Opening Address & Keynote Speech

Nov. 29th (Sat): 1:50 p.m. - 3:10 p.m. at J101

Panel Sessions

Nov. 29th (Sat): 9:15 a.m. - 5:05 p.m.

Nov. 30th (Sun): 9:15 a.m. - 5:25 p.m.



Bus Timetables

*Please refer to the "No School" timetable.

Oita Kotsu Bus

Beppu Station

↓
APU



APU

↓
Beppu Station



Kamenoi Bus *Japanese Only)

Beppu Station

↓
APU



Route 24

Beppu Station

↓
APU



Route 5

APU

↓
Beppu Station

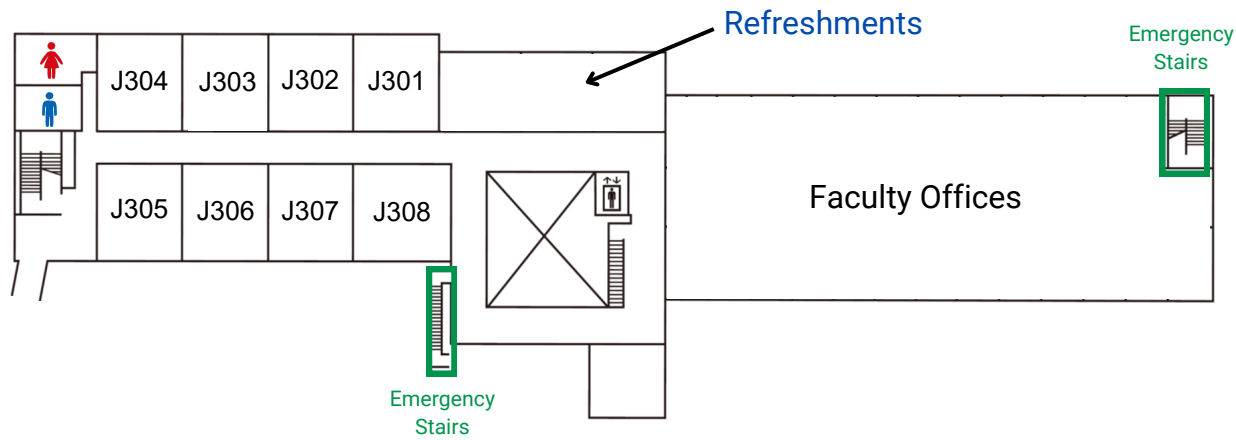


Route 5, 41

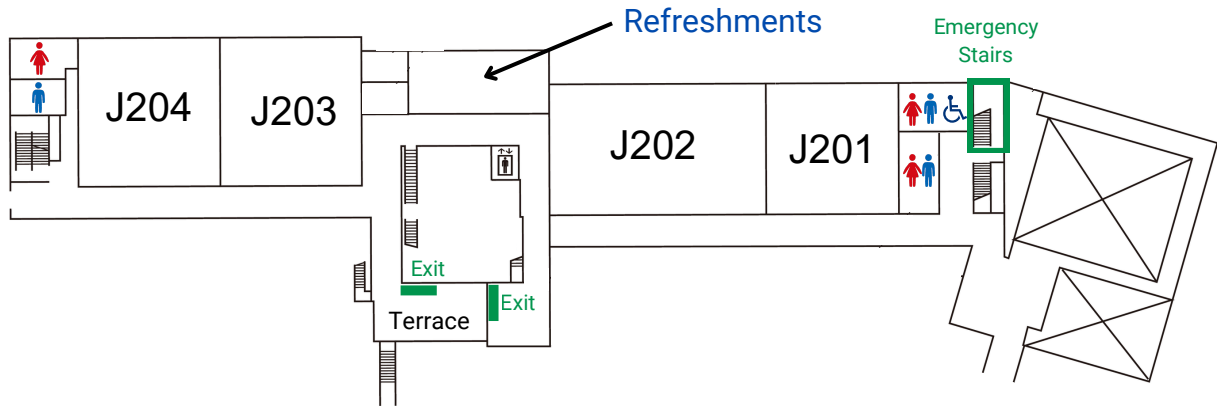


Building J / Green Commons Map

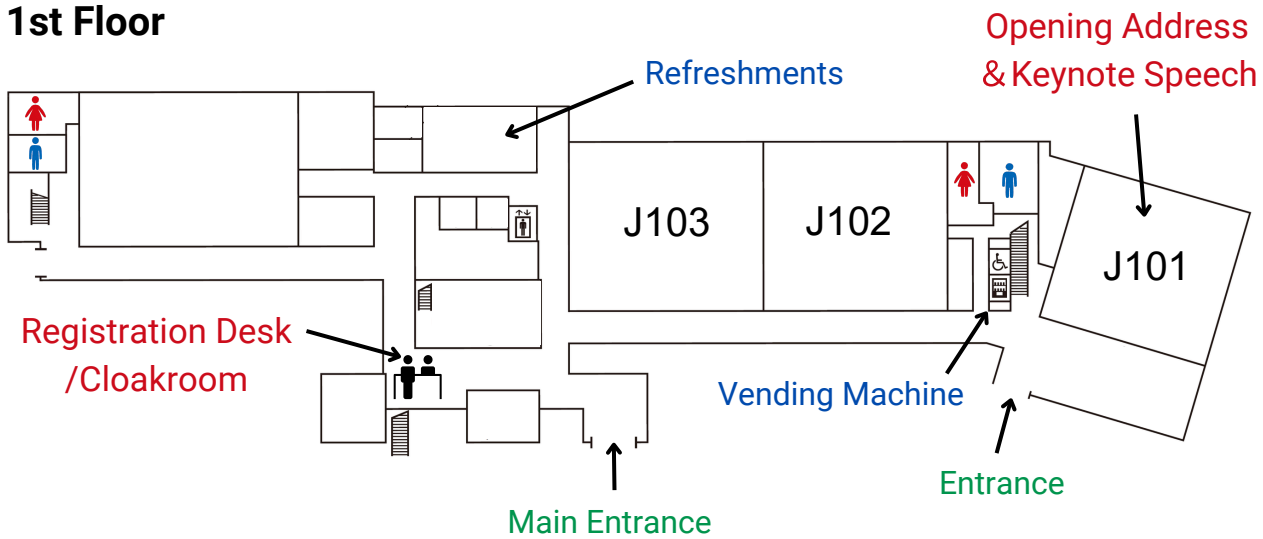
3rd Floor



2nd Floor



1st Floor





Free APU Wi-Fi Information

Wi-Fi Network	APU-Webauth
Password	webauth.apu.ac.jp
Web User Authentication	User ID: apconf00 Password: APConf00

How to Connect to the Wi-Fi

- 1) Please select the Wifi-Network named "APU-Webauth".
- 2) You will be prompted to enter a password. Please enter "webauth.apu.ac.jp".
- 3) After this, the default browser on your device should open, and you will be prompted to enter the web user authentication.
 - ① For USER ID, please enter "apconf00".
 - ② For Password, please enter "APConf00".
- 4) You should now be connected to the internet!

*Please note that the Wi-Fi capacity for each room is equal to the room capacity.
(i.e. if the room capacity is 20, then 20 devices can connect.)
For this reason, we kindly ask you to only connect to the Wi-Fi from one device.

In the event that you cannot access APU-Webauth, please access the network below.

Wi-Fi Network	APU-1Xauth
Web User Authentication	User ID: visitr Password: visitr

- 1) Please access the Wifi-Network named "APU-1Xauth".
- 2) After this, the default browser on your device should open, and you will be prompted to enter the web user authentication.
 - ① For USER ID, please enter "visitr".
 - ② For Password, please enter "visitr".
- 3) You should now be connected to the internet!

Sponsoring Organizations



Shape your world
Ritsumeikan
Asia Pacific University

Ritsumeikan Center for Asia Pacific Studies

