



JOIN AND USE

THE CO-OP THE SHOPS

For students
entering in spring 2025

The joining process will take place after the mandatory participation guidance on 3/28. Please bring your residence card and ¥5,000.

Please join before using the CO-OP.

APU-COOP is a store for its members.

It is made possible by the investment, use, and operation of its members.

You must join before using CO-OP in accordance with the "Consumer's Cooperative Union Law" before using any services.

All investments are returned upon graduation or retirement.

* membership fee

international student ... ¥5,000 [10 investment units]

JOIN US!
APU-COOP!



Please Show your CO-OP App barcode or membership card!

From Wednesday, November 1, 2023,

If you can't show your CO-OP App barcode or membership card, you will be charged the visitor's price.

The Univ. CO-OP App enriches your life!



CO-OP members get points when make e-money payments.



Book...10.0%
Cafeteria...1.0%



1pt=¥1

The amount will be added automatically.

○No contact ○Smooth ○Get points

About **70%** of customers use CO-OP App payment

And so many other benefits! ▶

Get a great breakfast and start a great day

¥100 Breakfast



Membership
ONLY



¥100 for a breakfast
taking 3 dishes
(rice + miso soup
+ 1 dishes)

Class day
7:45-8:45

CO-OP membership Only
E-money or Meal-System Only

How to use ¥100 Breakfast

- ① ライス・味噌汁・小鉢3つをお取りください
Take 3 dishes (rice/miso soup/ 1 dishes)
- ② 生協アプリ（電子マネー・ミール）でお支払い
Pay with Univ.CO-OP App
(CO-OP E-money or Meal-System Only)
- ③ 元気に行ってらっしゃい！
Have a good day!



Halal, vegetarian and vegan can also eat.



You can use the cafeteria at a better value than usual!

The Co-op Cafeteria supports everyone's dietary needs

Meal System

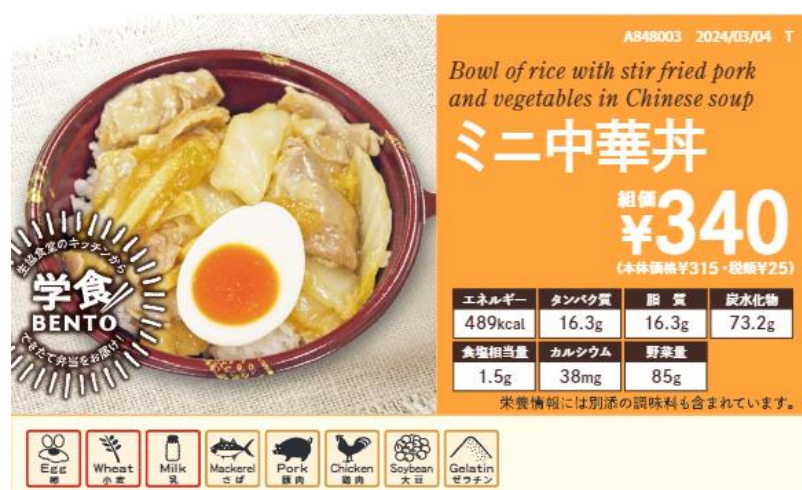


Membership ONLY

The "Meal System" is a special meal subscription plan designed to support the dietary needs of APU students.



- ❑ You can **use the cafeteria at a better value than usual!**
- ❑ You can enjoy **your meals without worrying about daily food expenses!**
- ❑ It applies not only to the cafeteria but also to the Co-op Shop's **"freshly baked bread"** and **"homemade bento boxes"!**



500 pieces sold in a single day!
These popular breads are a hit!

Over **70%** of new domestic students use it!

毎日しっかり食べたい方や
APハウス生・一人暮らしにおすすめ

1,400円プラン (1日2食目安)

1日利用上限金額: 1,400円

組合員価格 **166,000円**

最大利用可能金額 = **196,000円**
1,400円×140日

最大21日分30,000円分お得

自炊も頑張りたい方や
自宅生におすすめ

700円プラン (1日1食目安)

1日利用上限金額: 700円

組合員価格 **86,000円**

最大利用可能金額 = **98,000円**
700円×140日

最大17日分12,000円分お得

- If you exceed the maximum amount of the meal plan, you can use electronic money to cover the difference.
- You can use it on class days. Please check the calendar of available days on the Co-op's website.

For more details and to apply, please visit here.

https://coop.kyushu-bauc.or.jp/apu/newlife/newlife_150.html

Essential for life in Japan SIM card and Credit card

HIGH-SPEED INTERNET

5G


GTN U-Student

FAST AND AFFORDABLE

5GB	¥1,480 /Month
15GB	¥2,980 /Month
25GB	¥4,480 /Month

(TAX INCLUDED)

ONLINE REGISTRATION:
<https://www.gtn-mobile.com/s/uni-plan/preferred=APU>



HIGH-SPEED UNLIMITED

5G

GTN 5G Unlimited

UNLIMITED DATA WITH VOICE CALL PLAN*


ALL OVER COMMUNICATION AREAS IN JAPAN FREE 2GB DATA ROAMING OVERSEAS**

¥4,048 /Month
(TAX INCLUDED)

PHYSICAL SIM CARD + eSIM AVAILABLE!

*SPEED MAY BE REDUCED DUE TO FAIR SERVICE PROVISION OR ENVIRONMENTAL FACTORS. DOMESTIC CALLS ARE CHARGED BASED ON USAGE.
**GTN EAZY SIM OUTGOING CALL & SMS WILL BE CHARGED SEPARATELY.
***GTN 5G KAKEHO: FREE UNLIMITED FOR DOMESTIC CALLS ONLY, EXCLUDING 0570 NAVIDIAL NUMBER.

ONLINE REGISTRATION:
<https://www.gtn-mobile.com/s/preferred=APU>



BUDGET-FRIENDLY


GTN EAZY

MNP TRANSFER OK

3GB	¥1,200 /Month
10GB	¥2,200 /Month
30GB	¥4,200 /Month
50GB	¥6,200 /Month

(TAX INCLUDED)

ONLINE REGISTRATION:
<https://www.gtn-mobile.com/s/preferred=APU>



APU COOP Membership ONLY



International Student Discount Plan

- No binding contract
- 5G available
- No credit card/bank account required
- **Multi-language support**

All prices are tax included

- Handling fee 3,300yen
- Universal service fee,

Date and Time:

March 28th and 29th

Place: Cafeteria

Required documents

- ① Passport
- ② ID with overseas address

Only co-op members can apply!
Mitsui Sumitomo Card (NL)

No annual fee!

APU COOP Membership ONLY



- 1% point rebate for purchases made at Campus Shop!
- Lots of benefits after joining!



How to make credit card??

You must join before using any services.

The joining process will take place after the mandatory participation guidance on 3/28
Please bring your residence card and ¥5,000.

You must join before using CO-OP in accordance with the "Consumer's Cooperative Union Law" before using any services.



UNIV.
CO-OP

立命館生活協同組合(APU)
APU CO-OP

GTN Mobile

AFFORDABLE PLANS JUST FOR YOU!

We offer **three voice and SIM card plans** tailored to your needs.

HIGH-SPEED INTERNET

5G
Available in
Japan

GTN U-Student

FAST AND AFFORDABLE

5GB ¥1,480 /Month

15GB ¥2,980 /Month

25GB ¥4,480 /Month

(TAX INCLUDED)

ONLINE REGISTRATION:

[HTTPS://WWW.GTN-MOBILE.COM/S/UNI-PLAN/?REFERRERID=APU](https://www.gtn-mobile.com/s/uni-plan/?referrerid=apu)



HIGH-SPEED UNLIMITED

5G
Available in
Japan

GTN 5G Unlimited

UNLIMITED DATA WITH
VOICE CALL PLAN*

ALL OVER COMMUNICATION
AREAS IN JAPAN**
FREE 2GB DATA ROAMING
OVERSEAS

¥4,048 /Month

(TAX INCLUDED)



+

eSIM

PHYSICAL SIM CARD

AVAILABLE!

*1: SPEED MAY BE REDUCED DUE TO FAIR SERVICE PROVISION OR ENVIRONMENTAL FACTORS. DOMESTIC CALLS ARE CHARGED BASED ON USAGE.

*GTN EAZY SIM OUTGOING CALL & SMS WILL BE CHARGED SEPARATELY.

*GTN 5G KAKEHO: FREE UNLIMITED FOR DOMESTIC CALLS ONLY, EXCLUDING 0570 NAMEDIAL NUMBER.

BUDGET-FRIENDLY

GTN EAZY

MNP TRANSFER OK

3GB ¥1,200 /Month

10GB ¥2,200 /Month

30GB ¥4,200 /Month

50GB ¥6,200 /Month

(TAX INCLUDED)

ONLINE REGISTRATION:

[HTTPS://WWW.GTN-MOBILE.COM/S/EAZY-PLAN/?REFERRERID=APU](https://www.gtn-mobile.com/s/eazy-plan/?referrerid=apu)



Why GTN Mobile?

- No initial cash out
- Simple application process- available 24/7 online
- Multi-lingual customer support
- Fast delivery
- Payable at all convenience stores in Japan (Seven Eleven, Family Mart, and Lawson)



FEATURES:

- Includes Japan Number
- Incoming/Outgoing Call Functions
- Incoming/Outgoing SMS Functions
- Receive OTPs (One-Time Passwords) within Japan only
- No Contract Period / No Cancellation Fee

HOW TO APPLY

FROM JAPAN

1 APPLY ONLINE

Required Documents

1. Residence Card
2. Passport/Student ID

2 SCREENING & SHIPPING (GTN)

Approximately 1 to 2 days after application.

3 HOME DELIVERY

FROM OVERSEAS

1 APPLY ONLINE

Required Documents

1. Overseas ID with overseas address
2. Passport
3. Japanese Visa (submit one of the following):
 - Japanese Visa page in the passport
 - Certificate of Eligibility (COE)

2 SCREENING & SHIPPING (GTN)

Please apply at least 7 days before arriving in Japan

3 PICK UP AT AIRPORT

Narita, Haneda, Chubu Centrait, or Kansai

管理番号:120241127

FOR DETAILS, PLEASE CALL OR EMAIL:
03-5155-4673 INFO@GTN-MOBILE.COM

〒169-0072 2F, AKIYAMA BLDG.
1-15-15 OKUBO, SHINJUKU-KU, TOKYO

OFFICE HOURS: 10:00AM TO 6:30PM
MONDAY TO SUNDAY

DATA ONLY GTN PREPAID

— Simply Amazing —

- NO REGISTRATION FEE
- IDEAL FOR SHORT-TERM USAGE
- E-SIM AVAILABLE



ONLINE REGISTRATION:

[HTTPS://WWW.GTN-MOBILE.COM/S/?REFERRERID=APU](https://www.gtn-mobile.com/s/?referrerid=apu)

*REQUIRED DOCUMENT: PASSPORT OR RESIDENCE CARD

GTN WIFI MAX

STAY CONNECTED ON-THE-GO PORTABLE WIFI

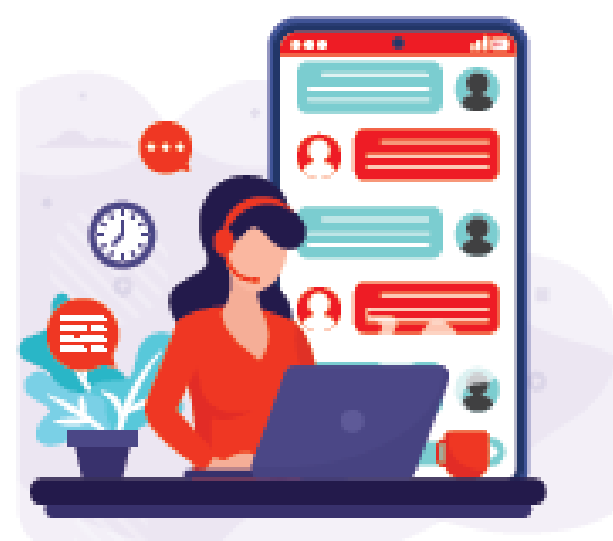
- NO CONTRACT PERIOD.
- NO CANCELLATION FEE.
- CONVENIENCE STORE PAYMENT IS ACCEPTED.
- THE DEPOSIT FEE OF ¥10,000 IS REFUNDABLE.
- AFTER 10GB DAILY ALLOWANCE IS USED UP, THE MAXIMUM SPEED OF 150MBPS WILL DECREASE TO 128KBPS.



¥5,390 /Month
(TAX INCLUDED)

LIFESTYLE SUPPORT APP *OPTIONAL SERVICE

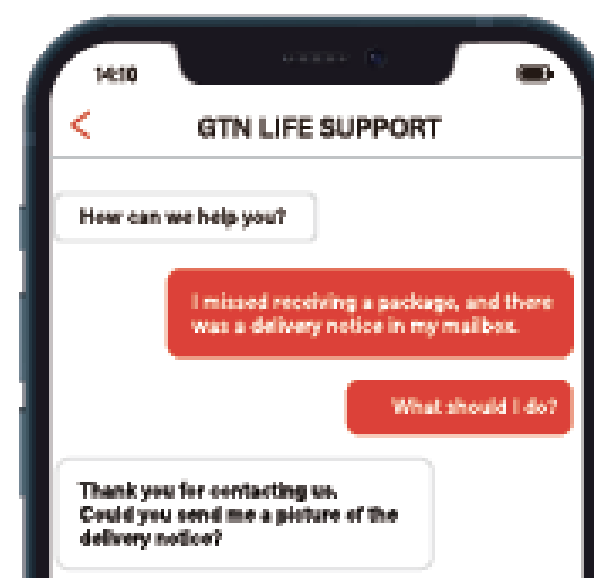
With this app, you can contact support via chat or call for assistance in 24 languages! Request interpretation for various situations directly through the app!!



¥1,078 /Month
(TAX INCLUDED)

Case Examples:

- ☒ Finding an English-speaking clinic nearby
- ☒ Making doctor's appointments
- ☒ Finding an English-speaking clinic nearby
- ☒ Making doctor's appointments
- ☒ Arranging package redelivery
- ☒ Renting a car



Providing generous support for students' "just-in-case" needs

CO-OP Students Comprehensive Mutual Insurance (G500)

APU
COOP Membership
ONLY

Student Comprehensive Mutual Insurance is the institutionalized version of the spirit of mutual help among students. The coverage required for student life can be achieved with a modest premium, providing secure and firm support. We enable students to continue their studies through insurance recommended with mutual insurance.

Insurance cover for your student life in Japan by paying a modest premium



¥500 per month

24-hour, 365-day coverage whether you are in Japan, returning to your own country or traveling abroad



24-hour, 365-day

System of mutual help to prepare to deal with injury and illness.

(Examples of coverage)

Hospitalization	¥5,000 per day from 1st day for 360 days	Outpatient treatment for injury	¥1,000 per day from 1st day for 90 days
Long-term Hospitalization	¥300,000 Hospitalization continuing for 270 days or longer (Once per hospitalization only)	Accident Disability	Maximum ¥1,500,000 The amount of insurance payout will depend on the severity of disability
Surgical procedures	¥20,000 per surgery	Proactive Mental Health Treatment	¥10,000 Once per Mutual Insurance period

Tanuro
the character for
Students
Comprehensive
Mutual Insurance



Please refer to the pamphlet and "Summary of Coverage" for detailed coverage information.



Annual premium
¥6,000

University CO-OP shop is run by membership.
Please become a member to make the best use of CO-OP.

Membership benefits of APU CO-OP

We offer really good membership benefits.

For example If you buy a 3,300 yen textbook for class
(TAX included)

10%
Point
return

save
330yen!

*English Academic
textbook and e-book
are excluded.

Get a
10% Point return
Books and Magazines

You can also order Japanese Books from
your PC and have them delivered to APU CO-OP.

**University CO-OP
Online Book ordering site**

<https://online.univ.coop/book/>

Extra-Services for CO-OP Members

- You can subscribe to your favorite magazines at CO-OP!
- If you can't find a book you need, you can order it at CO-OP.
- You are able to order CDs and DVDs at CO-OP as well.

by paying with University Co-op App.
(Points are automatically added to your Co-op App.)

Food Services at APU CO-OP Everyday happy price!

Beverages and Snacks/Candies

- For example**
- Water, Green Tea
 - Onigiri and Bread
 - Icecream ...And more!



Goods at APU



APU Original Products
APU original parka, bag,
mug etc...



If you want a specific stationery item,
please tell us and we will order it.
Please do not hesitate to ask!

20%Discount

stationery items

The CO-OP Convenience Store

Discounts will be applied by presenting
University Co-op App or CO-OP card.

excluding APU goods, books,
and some products.

Handmade in the cafeteria every day!

Bread and "Obento"

(Japanese style lunch box)

1 point
per 100 yen

Frozen foods

Fried chicken, Gyoza, and others

HALAL

HALAL noodles, snacks,
frozen HALAL meat products.

Daily products and food

We help your daily life!

Important Notice

If you withdraw from the university
for some reason, you must have 4 items
ready to have your money returned.

1. Application Form of Withdrawal
2. Certification to Leave School
(withdrawal/expulsion, or leave of absence)
3. Inkan
4. App or CO-OP card



Please feel free to advise us, because
we need your voice to make the store
a better place for everyone!

**Sharing capital will be returned
when you graduate or leave APU.**



RITSUMEIKAN CO-OP

University CO-OP shop is run by membership.
Please become a member to make the best use of CO-OP.

Membership benefits of APU CO-OP

We offer really good membership benefits.

Ferry

Beppu-Osaka / Oita-Kobe



CO-OP members can apply ferry tickets at a student discount rate.

Special
Discount



for **Rental Car**

If you are a member of CO-OP, renting a car is cheaper for you.

*For international students
If you want to drive in Japan, make sure your driving license can be used in Japan.

Convenient Travel Planning with Friendly CO-OP Shop!



If you have difficulties making your travel plans with Japanese travel agencies in Japanese, please come to APU CO-OP to make your best plan. You can also book your flight ticket from Japan to your country. Please feel free to ask!

Job-hunting

Our professional staff will give you the best support by introducing you the appropriate plan to make your job-hunting process less costly. You can also use our services to book tickets for Ferry, Domestic and International flights, Bus tickets and make a hotel reservation.

and
more

CO-OP Special Discount for Correspondence Courses

If you want to gain special skills but have no time to go to another school, please use these correspondence courses to increase your skill.

(mail, international student ID, introductions to youth hostels, etc)



RITSUMEIKAN CO-OP
APU CO-OP



**Sharing capital will be returned
when you graduate or leave APU.**

HP

立命館生協 APU



<http://www.ritsco-op.jp/apu/>

Instagram



←Check out our page!

Please search by "apu co-op" on Instagram.

We have a lot of information to help your Trip!

Sep. 2024