

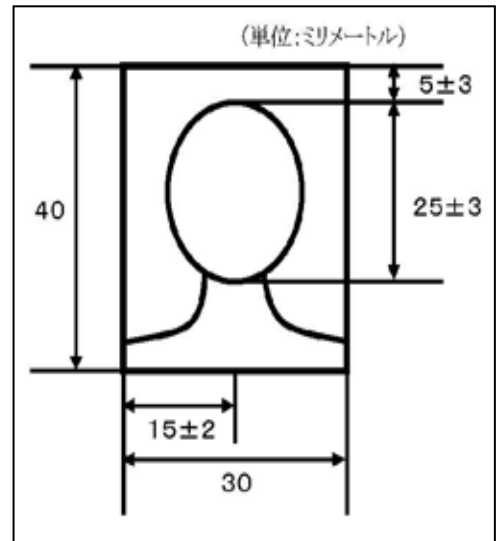
1. Things to Remember When Taking Your Photos

Photos need to be the designated size (40mm x 30mm), and must have been taken within three months of submitting your application.

【Specifications for Photos】

The following photos will not be accepted:

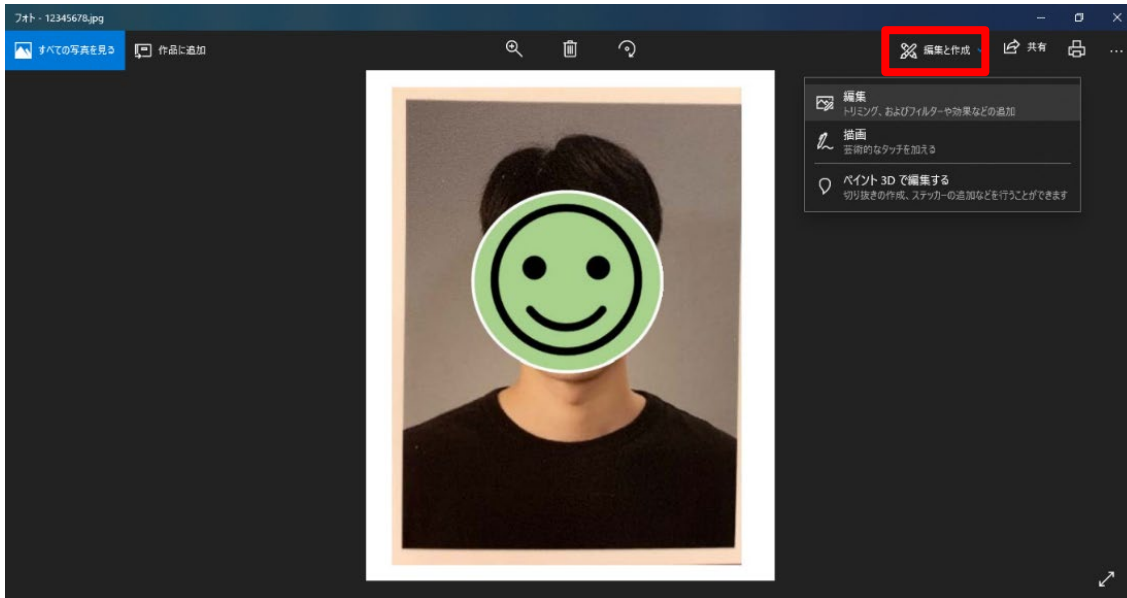
- × The same photo that is on your present residence card
- × Photos not of the designated size (40mm x 30mm)
- × Photos of you wearing glasses or a hat
- × Photos where your teeth are showing
- × Photos with shadows on your face or those that are dark or otherwise unclear
- × Photos where your hair covers your eyes
- × Photos with dark backgrounds that make it difficult to distinguish the outline of your face



How to process photos

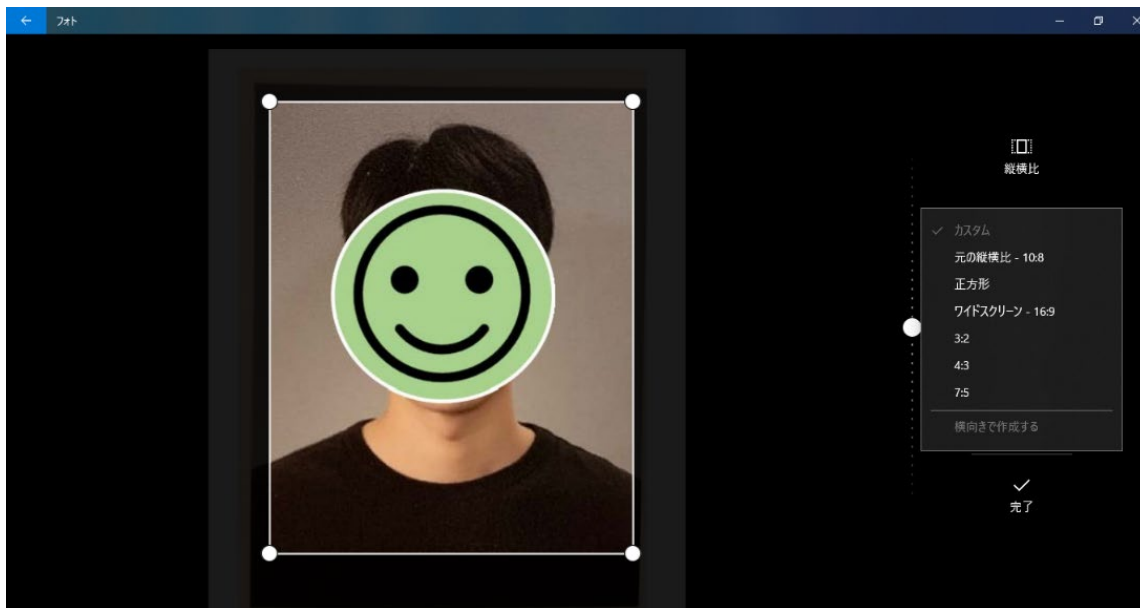
① JPG format.

Right-click on data → Open from Programs → Photo → Edit and Create → Edit → Crop and Rotate.

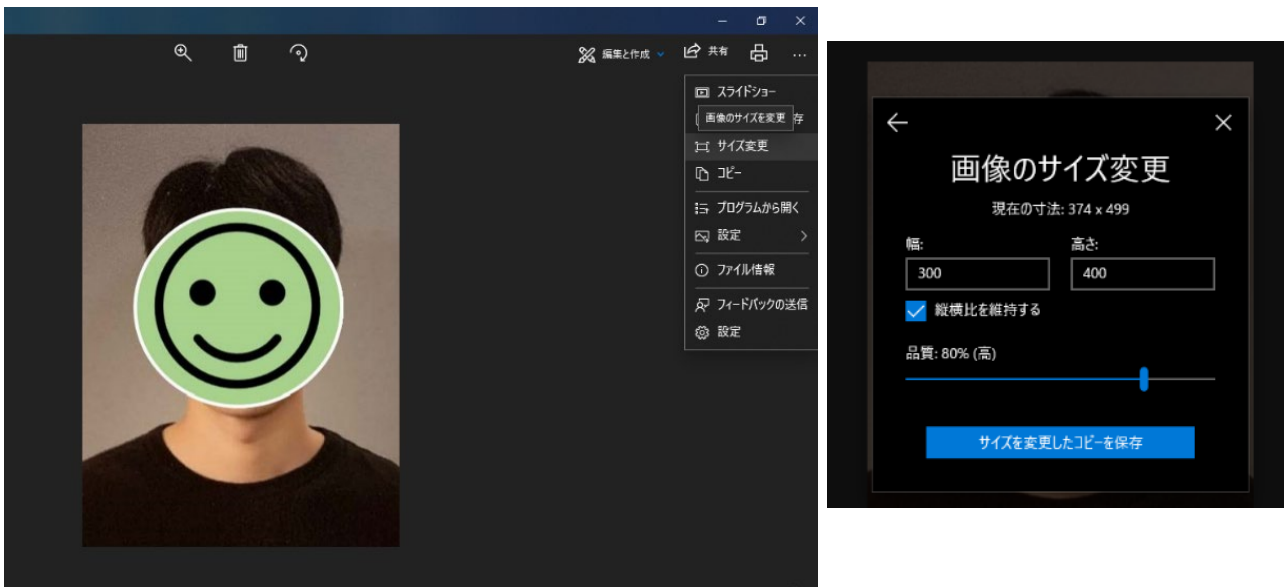


Aspect ratio → Custom → Cut out unwanted parts → Done → Save.

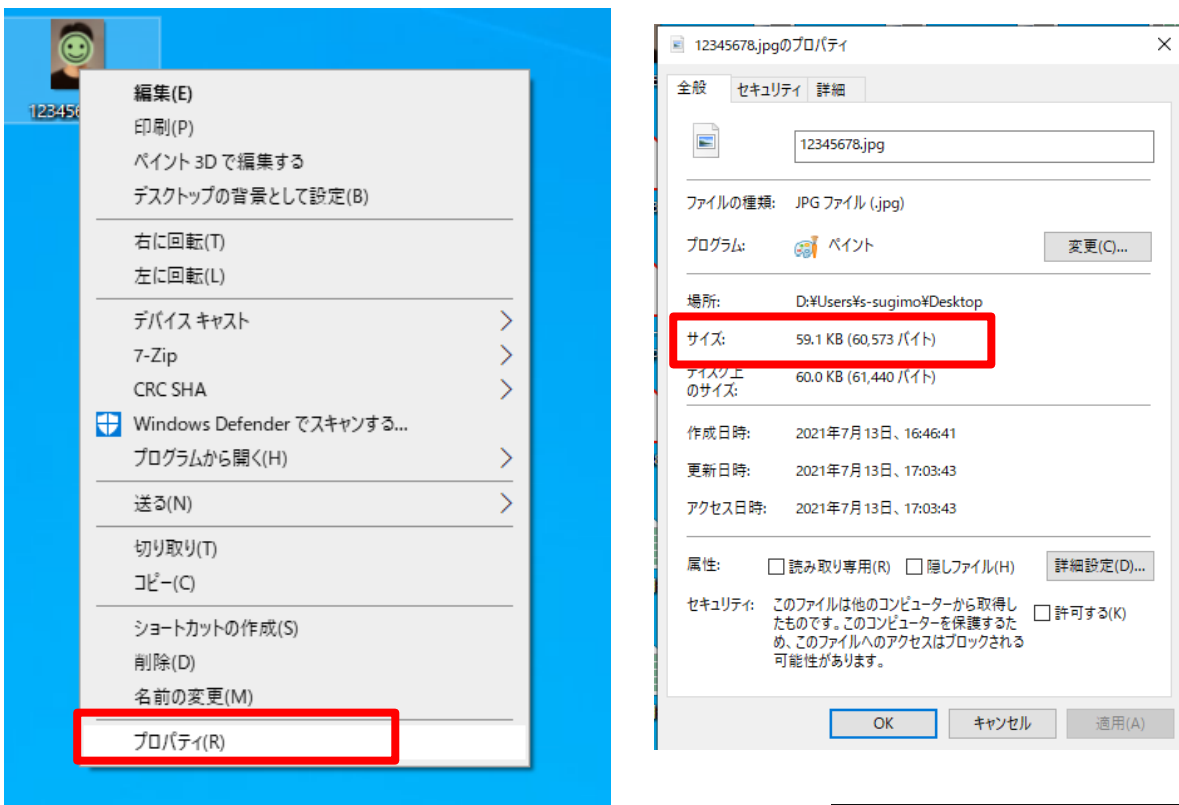
Aspect ratio → 4:3 → Done → Save.



Top right "..."/> → Resize → Define custom dimensions → Width: 300 Height: 400 → Save.



How to check file size



If more than 50 Kbytes → set quality to 70% and store elsewhere.

